

KLKB1 Antibody
Rabbit mAb
Catalog # AP91408

Specification

KLKB1 Antibody - Product Information

Application	WB, IHC, IP
Primary Accession	P03952
Reactivity	Rat
Clonality	Monoclonal

Other Names

Fletcher factor; kallikrein B plasma; Kallikrein B1; Kininogenin; KLK3; KLKB1; PKK; PKKD; Plasma kallikrein light chain; PPK; Prekallikrein;

Isotype	Rabbit IgG
Host	Rabbit
Calculated MW	71370 Da

KLKB1 Antibody - Additional Information

Purification	Affinity-chromatography
Immunogen	A synthesized peptide derived from human KLKB1

Description	The enzyme cleaves Lys-Arg and Arg-Ser bonds. It activates, in a reciprocal reaction, factor XII after its binding to a negatively charged surface. It also releases bradykinin from HMW kininogen and may also play a role in the renin-angiotensin system by converting prorenin into renin.
-------------	--

Storage Condition and Buffer	Rabbit IgG in phosphate buffered saline , pH 7.4, 150mM NaCl, 0.02% sodium azide and 50% glycerol. Store at +4°C short term. Store at -20°C long term. Avoid freeze / thaw cycle.
------------------------------	---

KLKB1 Antibody - Protein Information

Name KLKB1

Synonyms KLK3

Function

Participates in the surface-dependent activation of blood coagulation. Activates, in a reciprocal reaction, coagulation factor XII/F12 after binding to negatively charged surfaces. Releases bradykinin from HMW kininogen and may also play a role in the renin- angiotensin system by converting prorenin into renin.

Cellular Location

Secreted.

Tissue Location

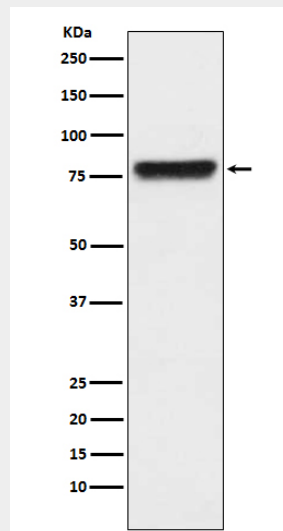
Found in plasma (at protein level).

KLKB1 Antibody - Protocols

Provided below are standard protocols that you may find useful for product applications.

- [Western Blot](#)
- [Blocking Peptides](#)
- [Dot Blot](#)
- [Immunohistochemistry](#)
- [Immunofluorescence](#)
- [Immunoprecipitation](#)
- [Flow Cytometry](#)
- [Cell Culture](#)

KLKB1 Antibody - Images



Western blot analysis of KLKB1 expression in human plasma lysate.