

ORM1 Antibody
Rabbit mAb
Catalog # AP91394

Specification

ORM1 Antibody - Product Information

Application	WB, IHC
Primary Accession	P02763
Clonality	Monoclonal
Other Names	
AGP 1; AGP A; AGP1; Alpha 1 acid glycoprotein; alpha-1-AGP; HEL S 153w; ORM; Orosomuroid 1;	
Isotype	Rabbit IgG
Host	Rabbit
Calculated MW	23512 Da

ORM1 Antibody - Additional Information

Purification	Affinity-chromatography
Immunogen	A synthesized peptide derived from human ORM1
Description	Appears to function in modulating the activity of the immune system during the acute-phase reaction.
Storage Condition and Buffer	Rabbit IgG in phosphate buffered saline , pH 7.4, 150mM NaCl, 0.02% sodium azide and 50% glycerol. Store at +4°C short term. Store at -20°C long term. Avoid freeze / thaw cycle.

ORM1 Antibody - Protein Information

Name ORM1

Synonyms AGP1

Function

Functions as a transport protein in the blood stream. Binds various ligands in the interior of its beta-barrel domain. Also binds synthetic drugs and influences their distribution and availability in the body. Appears to function in modulating the activity of the immune system during the acute-phase reaction.

Cellular Location

Secreted.

Tissue Location

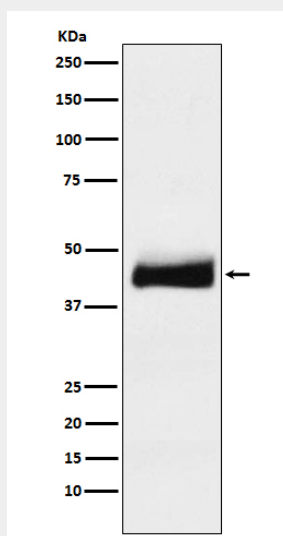
Expressed by the liver and secreted in plasma.

ORM1 Antibody - Protocols

Provided below are standard protocols that you may find useful for product applications.

- [Western Blot](#)
- [Blocking Peptides](#)
- [Dot Blot](#)
- [Immunohistochemistry](#)
- [Immunofluorescence](#)
- [Immunoprecipitation](#)
- [Flow Cytometry](#)
- [Cell Culture](#)

ORM1 Antibody - Images



Western blot analysis of ORM1 expression in human testis lysate.