

**SERPINC1 Antibody**  
Rabbit mAb  
Catalog # AP91390**Specification**

---

**SERPINC1 Antibody - Product Information**

Application	WB, ICC
Primary Accession	<a href="#">P01008</a>
Clonality	<b>Monoclonal</b>
<b>Other Names</b>	
Antithrombin; Antithrombin III; AT 3; AT III; AT3; AT3D; ATIII; Heparin cofactor I; Serpin C1; Serpin family C member 1; SERPINC1; THPH7;	
Isotype	<b>Rabbit IgG</b>
Host	<b>Rabbit</b>
Calculated MW	<b>52602 Da</b>

**SERPINC1 Antibody - Additional Information**

Purification	<b>Affinity-chromatography</b>
Immunogen	<b>A synthesized peptide derived from human SERPINC1</b>
Description	<b>Most important serine protease inhibitor in plasma that regulates the blood coagulation cascade. AT-III inhibits thrombin as well as factors IXa, Xa and XIa. Its inhibitory activity is greatly enhanced in the presence of heparin.</b>
Storage Condition and Buffer	<b>Rabbit IgG in phosphate buffered saline , pH 7.4, 150mM NaCl, 0.02% sodium azide and 50% glycerol. Store at +4°C short term. Store at -20°C long term. Avoid freeze / thaw cycle.</b>

**SERPINC1 Antibody - Protein Information****Name** SERPINC1**Synonyms** AT3**Function**

Most important serine protease inhibitor in plasma that regulates the blood coagulation cascade (PubMed: [15140129](http://www.uniprot.org/citations/15140129), PubMed: [15853774](http://www.uniprot.org/citations/15853774)). AT-III inhibits thrombin, matriptase-3/TMPRSS7, as well as factors IXa, Xa and XIa (PubMed: [15140129](http://www.uniprot.org/citations/15140129)). Its inhibitory activity is greatly enhanced in the presence of heparin.

**Cellular Location**

Secreted, extracellular space.

**Tissue Location**

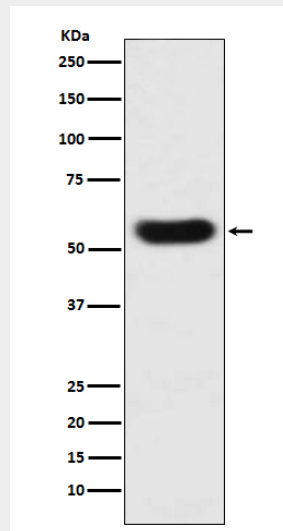
Found in plasma.

**SERPINC1 Antibody - Protocols**

Provided below are standard protocols that you may find useful for product applications.

- [Western Blot](#)
- [Blocking Peptides](#)
- [Dot Blot](#)
- [Immunohistochemistry](#)
- [Immunofluorescence](#)
- [Immunoprecipitation](#)
- [Flow Cytometry](#)
- [Cell Culture](#)

**SERPINC1 Antibody - Images**



Western blot analysis of SERPINC1 expression in human plasma lysate.