

HEC1 Antibody
Rabbit mAb
Catalog # AP91388

Specification

HEC1 Antibody - Product Information

Application	WB, IP
Primary Accession	O14777
Reactivity	Rat
Clonality	Monoclonal
Other Names	
HEC; HsHec1; hsNDC80; Kinetochore protein Hec1; Kinetochore-associated protein 2; KNTC2; ndc80; TID3;	
Isotype	Rabbit IgG
Host	Rabbit
Calculated MW	73913 Da

HEC1 Antibody - Additional Information

Purification	Affinity-chromatography
Immunogen	A synthesized peptide derived from human HEC1
Description	Acts as a component of the essential kinetochore-associated NDC80 complex, which is required for chromosome segregation and spindle checkpoint activity. Required for kinetochore integrity and the organization of stable microtubule binding sites in the outer plate of the kinetochore.
Storage Condition and Buffer	Rabbit IgG in phosphate buffered saline , pH 7.4, 150mM NaCl, 0.02% sodium azide and 50% glycerol. Store at +4°C short term. Store at -20°C long term. Avoid freeze / thaw cycle.

HEC1 Antibody - Protein Information

Name NDC80

Synonyms HEC, HEC1, KNTC2

Function

Acts as a component of the essential kinetochore-associated NDC80 complex, which is required for chromosome segregation and spindle checkpoint activity (PubMed:12351790, PubMed:14654001, PubMed:14699129, PubMed:14699129, PubMed:14699129)

[15062103](http://www.uniprot.org/citations/15062103), PubMed:[15235793](http://www.uniprot.org/citations/15235793), PubMed:[15239953](http://www.uniprot.org/citations/15239953), PubMed:[15548592](http://www.uniprot.org/citations/15548592), PubMed:[16732327](http://www.uniprot.org/citations/16732327), PubMed:[30409912](http://www.uniprot.org/citations/30409912), PubMed:[9315664](http://www.uniprot.org/citations/9315664)). Required for kinetochore integrity and the organization of stable microtubule binding sites in the outer plate of the kinetochore (PubMed:[15548592](http://www.uniprot.org/citations/15548592), PubMed:[30409912](http://www.uniprot.org/citations/30409912)). The NDC80 complex synergistically enhances the affinity of the SKA1 complex for microtubules and may allow the NDC80 complex to track depolymerizing microtubules (PubMed:[23085020](http://www.uniprot.org/citations/23085020)). Plays a role in chromosome congression and is essential for the end-on attachment of the kinetochores to spindle microtubules (PubMed:[23891108](http://www.uniprot.org/citations/23891108), PubMed:[25743205](http://www.uniprot.org/citations/25743205)).

Cellular Location

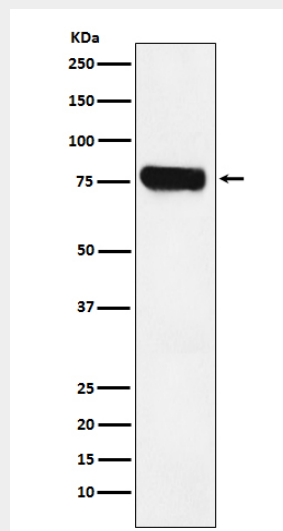
Nucleus. Chromosome, centromere, kinetochore. Note=Localizes to kinetochores from late prophase to anaphase (PubMed:14699129) Localizes specifically to the outer plate of the kinetochore (PubMed:14699129).

HEC1 Antibody - Protocols

Provided below are standard protocols that you may find useful for product applications.

- [Western Blot](#)
- [Blocking Peptides](#)
- [Dot Blot](#)
- [Immunohistochemistry](#)
- [Immunofluorescence](#)
- [Immunoprecipitation](#)
- [Flow Cytometry](#)
- [Cell Culture](#)

HEC1 Antibody - Images



Western blot analysis of HEC1 expression in Jurkat cell lysate.