

**Prothrombin Antibody**  
Rabbit mAb  
Catalog # AP91382**Specification****Prothrombin Antibody - Product Information**

Application	WB, IP
Primary Accession	<a href="#">P00734</a>
Clonality	Monoclonal
<b>Other Names</b>	
Coagulation factor II; F2; Factor II; Prepro coagulation factor II; Prothrombin; prothrombin B-chain; PT; RPRGL2; serine protease; THPH1; Thrombin heavy chain;	
Isotype	Rabbit IgG
Host	Rabbit
Calculated MW	70037 Da

**Prothrombin Antibody - Additional Information**

Purification	Affinity-chromatography
Immunogen	A synthesized peptide derived from human Prothrombin
Description	Thrombin, which cleaves bonds after Arg and Lys, converts fibrinogen to fibrin and activates factors V, VII, VIII, XIII, and, in complex with thrombomodulin, protein C. Functions in blood homeostasis, inflammation and wound healing.
Storage Condition and Buffer	Rabbit IgG in phosphate buffered saline , pH 7.4, 150mM NaCl, 0.02% sodium azide and 50% glycerol. Store at +4°C short term. Store at -20°C long term. Avoid freeze / thaw cycle.

**Prothrombin Antibody - Protein Information****Name** F2**Function**

Thrombin, which cleaves bonds after Arg and Lys, converts fibrinogen to fibrin and activates factors V, VII, VIII, XIII, and, in complex with thrombomodulin, protein C. Functions in blood homeostasis, inflammation and wound healing. Thrombin triggers the production of pro-inflammatory cytokines, such as MCP-1/CCL2 and IL8/CXCL8, in endothelial cells (PubMed:<a href="http://www.uniprot.org/citations/30568593" target="\_blank">30568593</a>, PubMed:<a href="http://www.uniprot.org/citations/9780208" target="\_blank">9780208</a>).

**Cellular Location**

Secreted, extracellular space.

### Tissue Location

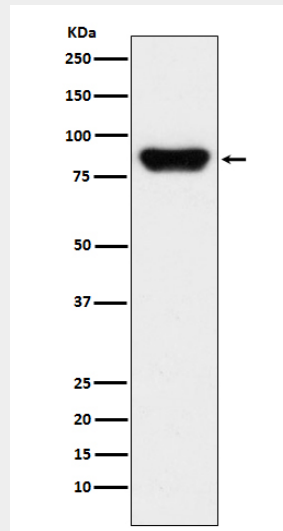
Expressed by the liver and secreted in plasma.

### Prothrombin Antibody - Protocols

Provided below are standard protocols that you may find useful for product applications.

- [Western Blot](#)
- [Blocking Peptides](#)
- [Dot Blot](#)
- [Immunohistochemistry](#)
- [Immunofluorescence](#)
- [Immunoprecipitation](#)
- [Flow Cytometry](#)
- [Cell Culture](#)

### Prothrombin Antibody - Images



Western blot analysis of Prothrombin expression in human serum lysate.