

CEACAM6 Antibody
Rabbit mAb
Catalog # AP91381**Specification**

CEACAM6 Antibody - Product Information

Application	WB, IHC, ICC, IP
Primary Accession	P40199
Reactivity	Rat
Clonality	Monoclonal
Other Names	
CD66c; CEACAM6; CEAL; NCA; Non specific cross reacting antigen; Normal cross reacting antigen;	
Isotype	Rabbit IgG
Host	Rabbit
Calculated MW	37195 Da

CEACAM6 Antibody - Additional Information

Purification	Affinity-chromatography
Immunogen	A synthesized peptide derived from human CEACAM6
Description	Mediate homotypic and heterotypic intercellular adhesion events independently of cell type .
Storage Condition and Buffer	Rabbit IgG in phosphate buffered saline , pH 7.4, 150mM NaCl, 0.02% sodium azide and 50% glycerol. Store at +4°C short term. Store at -20°C long term. Avoid freeze / thaw cycle.

CEACAM6 Antibody - Protein Information**Name** CEACAM6**Synonyms** NCA**Function**

Cell surface glycoprotein that plays a role in cell adhesion and tumor progression (PubMed:10910050, PubMed:11590190, PubMed:1378450, PubMed:14724575, PubMed:16204051, PubMed:2022629, PubMed:2803308, PubMed:8776764). Intercellular adhesion occurs in a calcium- and fibronectin-independent manner (PubMed:16204051, PubMed:<a

<http://www.uniprot.org/citations/2022629> target="_blank">2022629). Mediates homophilic and heterophilic cell adhesion with other carcinoembryonic antigen-related cell adhesion molecules, such as CEACAM5 and CEACAM8 (PubMed:11590190, PubMed:16204051, PubMed:2022629, PubMed:2803308, PubMed:8776764). Heterophilic interaction with CEACAM8 occurs in activated neutrophils (PubMed:8776764). Plays a role in neutrophil adhesion to cytokine- activated endothelial cells (PubMed:1378450). Plays a role as an oncogene by promoting tumor progression; positively regulates cell migration, cell adhesion to endothelial cells and cell invasion (PubMed:16204051). Also involved in the metastatic cascade process by inducing gain resistance to anoikis of pancreatic adenocarcinoma and colorectal carcinoma cells (PubMed:10910050, PubMed:14724575).

Cellular Location

Cell membrane; Lipid-anchor, GPI-anchor. Apical cell membrane. Cell surface. Note=Localized to the apical glycocalyx surface.

Tissue Location

Expressed in neutrophils (PubMed:1378450). Expressed in columnar epithelial and goblet cells of the colon (PubMed:10436421). Expressed in numerous tumor cell lines (at protein level) (PubMed:16204051).

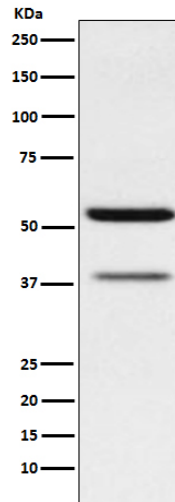
CEACAM6 Antibody - Protocols

Provided below are standard protocols that you may find useful for product applications.

- [Western Blot](#)
- [Blocking Peptides](#)
- [Dot Blot](#)
- [Immunohistochemistry](#)
- [Immunofluorescence](#)
- [Immunoprecipitation](#)
- [Flow Cytometry](#)
- [Cell Culture](#)

CEACAM6 Antibody - Images





Western blot analysis of CEACAM6 expression in MCF7 cell lysate.