

APOC3 Antibody
Rabbit mAb
Catalog # AP91379**Specification**

APOC3 Antibody - Product Information

Application	WB, IHC
Primary Accession	P02656
Clonality	Monoclonal
Other Names	
APOC3; APO C3; Apo CIII; ApoC III; APOC3; ApoCIII; Apolipoprotein C III; Apolipoprotein C3;	
Isotype	Rabbit IgG
Host	Rabbit
Calculated MW	10852 Da

APOC3 Antibody - Additional Information

Purification	Affinity-chromatography
Immunogen	A synthesized peptide derived from human APOC3
Description	Inhibits lipoprotein lipase and hepatic lipase and decreases the uptake of lymph chylomicrons by hepatic cells. This suggests that it delays the catabolism of triglyceride-rich particles.
Storage Condition and Buffer	Rabbit IgG in phosphate buffered saline , pH 7.4, 150mM NaCl, 0.02% sodium azide and 50% glycerol. Store at +4°C short term. Store at -20°C long term. Avoid freeze / thaw cycle.

APOC3 Antibody - Protein Information**Name** APOC3**Function**

Component of triglyceride-rich very low density lipoproteins (VLDL) and high density lipoproteins (HDL) in plasma (PubMed:[18201179](http://www.uniprot.org/citations/18201179), PubMed:[22510806](http://www.uniprot.org/citations/22510806)). Plays a multifaceted role in triglyceride homeostasis (PubMed:[18201179](http://www.uniprot.org/citations/18201179), PubMed:[22510806](http://www.uniprot.org/citations/22510806)). Intracellularly, promotes hepatic very low density lipoprotein 1 (VLDL1) assembly and secretion; extracellularly, attenuates hydrolysis and clearance of triglyceride- rich lipoproteins (TRLs) (PubMed:[18201179](http://www.uniprot.org/citations/18201179), PubMed:[22510806](http://www.uniprot.org/citations/22510806)). Impairs the lipolysis of TRLs by inhibiting lipoprotein lipase and the hepatic uptake of TRLs by remnant receptors (PubMed:[18201179](http://www.uniprot.org/citations/18201179))

target="_blank">18201179, PubMed:22510806). Formed of several curved helices connected via semiflexible hinges, so that it can wrap tightly around the curved micelle surface and easily adapt to the different diameters of its natural binding partners (PubMed:18408013).

Cellular Location

Secreted

Tissue Location

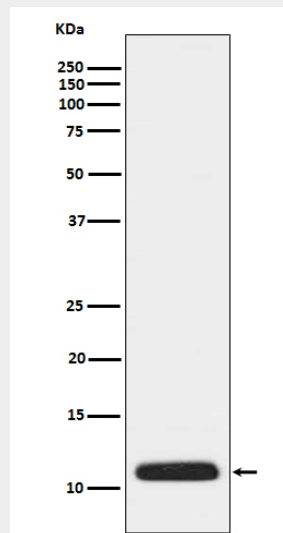
Liver..

APOC3 Antibody - Protocols

Provided below are standard protocols that you may find useful for product applications.

- [Western Blot](#)
- [Blocking Peptides](#)
- [Dot Blot](#)
- [Immunohistochemistry](#)
- [Immunofluorescence](#)
- [Immunoprecipitation](#)
- [Flow Cytometry](#)
- [Cell Culture](#)

APOC3 Antibody - Images



Western blot analysis of APOC3 expression in human plasma lysate.