

Bag3 Antibody
Rabbit mAb
Catalog # AP91373

Specification

Bag3 Antibody - Product Information

Application	WB, IHC, IP
Primary Accession	O95817
Clonality	Monoclonal
Other Names	
BAG 3; BAG family molecular chaperone regulator 3; Bag3; Bcl 2 binding protein; Bcl-2-binding protein Bis; BIS; CAIR 1; Docking protein CAIR 1; MFM6;	
Isotype	Rabbit IgG
Host	Rabbit
Calculated MW	61595 Da

Bag3 Antibody - Additional Information

Purification	Affinity-chromatography
Immunogen	A synthesized peptide derived from human Bag3
Description	Inhibits the chaperone activity of HSP70/HSC70 by promoting substrate release. Has anti-apoptotic activity.
Storage Condition and Buffer	Rabbit IgG in phosphate buffered saline , pH 7.4, 150mM NaCl, 0.02% sodium azide and 50% glycerol. Store at +4°C short term. Store at -20°C long term. Avoid freeze / thaw cycle.

Bag3 Antibody - Protein Information

Name BAG3

Synonyms BIS

Function

Co-chaperone for HSP70 and HSC70 chaperone proteins. Acts as a nucleotide-exchange factor (NEF) promoting the release of ADP from the HSP70 and HSC70 proteins thereby triggering client/substrate protein release. Nucleotide release is mediated via its binding to the nucleotide-binding domain (NBD) of HSPA8/HSC70 where as the substrate release is mediated via its binding to the substrate-binding domain (SBD) of HSPA8/HSC70 (PubMed:[27474739](http://www.uniprot.org/citations/27474739)), PubMed:[9873016](http://www.uniprot.org/citations/9873016)). Has anti-apoptotic activity (PubMed:[10597216](http://www.uniprot.org/citations/10597216)). Plays a role in the HSF1 nucleocytoplasmic transport (PubMed:[26159920](http://www.uniprot.org/citations/26159920)).

Cellular Location

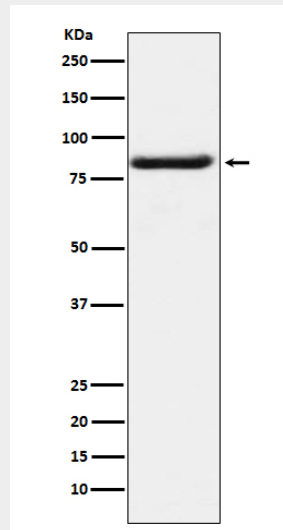
Nucleus. Cytoplasm. Note=Colocalizes with HSF1 to the nucleus upon heat stress
(PubMed:26159920)

Bag3 Antibody - Protocols

Provided below are standard protocols that you may find useful for product applications.

- [Western Blot](#)
- [Blocking Peptides](#)
- [Dot Blot](#)
- [Immunohistochemistry](#)
- [Immunofluorescence](#)
- [Immunoprecipitation](#)
- [Flow Cytometry](#)
- [Cell Culture](#)

Bag3 Antibody - Images



Western blot analysis of Bag3 expression in K562 cell lysate.