

BNP Antibody
Rabbit mAb
Catalog # AP91372

Specification

BNP Antibody - Product Information

Application	WB
Primary Accession	P16860
Clonality	Monoclonal
Other Names	
Brain natriuretic peptide 32; Natriuretic peptide B; Natriuretic peptides B; natriuretic protein; NPPB;	
Isotype	Rabbit IgG
Host	Rabbit
Calculated MW	14726 Da

BNP Antibody - Additional Information

Purification	Affinity-chromatography
Immunogen	A synthesized peptide derived from human BNP
Description	Brain natriuretic peptide (BNP) circulates in blood as a peptide hormone with natriuretic, vasodilatory and renin inhibitory properties. BNP is secreted predominantly by the left ventricular myocytes in response to volume expansion and pressure overload.
Storage Condition and Buffer	Rabbit IgG in phosphate buffered saline , pH 7.4, 150mM NaCl, 0.02% sodium azide and 50% glycerol. Store at +4°C short term. Store at -20°C long term. Avoid freeze / thaw cycle.

BNP Antibody - Protein Information

Name NPPB

Function

[Brain natriuretic peptide 32]: Cardiac hormone that plays a key role in mediating cardio-renal homeostasis (PubMed: [1672777](http://www.uniprot.org/citations/1672777), PubMed: [17372040](http://www.uniprot.org/citations/17372040), PubMed: [1914098](http://www.uniprot.org/citations/1914098), PubMed: [9458824](http://www.uniprot.org/citations/9458824)). May also function as a paracrine antifibrotic factor in the heart (By similarity). Acts by specifically binding and stimulating NPR1 to produce cGMP, which in turn activates effector proteins that drive various biological responses (PubMed: [1672777](http://www.uniprot.org/citations/1672777), PubMed: [1672777](http://www.uniprot.org/citations/1672777)).

href="http://www.uniprot.org/citations/17349887" target="_blank">17349887, PubMed:17372040, PubMed:21098034, PubMed:25339504, PubMed:9458824). Involved in regulating the extracellular fluid volume and maintaining the fluid- electrolyte balance through natriuresis, diuresis, vasorelaxation, and inhibition of renin and aldosterone secretion (PubMed:1914098, PubMed:9458824). Binds the clearance receptor NPR3 (PubMed:16870210).

Cellular Location

[NT-proBNP]: Secreted Note=Detected in blood. [Brain natriuretic peptide 32]: Secreted. Note=Detected in blood.

Tissue Location

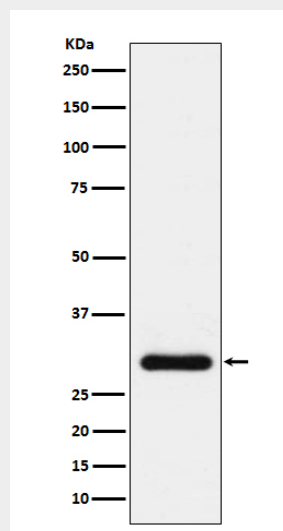
[Brain natriuretic peptide 32]: Detected in the cardiac atria (at protein level) (PubMed:2136732, PubMed:2138890) Detected in the kidney distal tubular cells (at protein level) (PubMed:9794555).

BNP Antibody - Protocols

Provided below are standard protocols that you may find useful for product applications.

- [Western Blot](#)
- [Blocking Peptides](#)
- [Dot Blot](#)
- [Immunohistochemistry](#)
- [Immunofluorescence](#)
- [Immunoprecipitation](#)
- [Flow Cytometry](#)
- [Cell Culture](#)

BNP Antibody - Images



Western blot analysis of BNP expression in human plasma lysate.