

p23 Antibody
Rabbit mAb
Catalog # AP91369

Specification

p23 Antibody - Product Information

Application	WB, ICC, IP
Primary Accession	Q15185
Reactivity	Rat
Clonality	Monoclonal
Other Names	
cPGES; Cytosolic prostaglandin E synthase; Hsp90 co chaperone; P23; Sid 3177; TEBP;	
Isotype	Rabbit IgG
Host	Rabbit
Calculated MW	18697 Da

p23 Antibody - Additional Information

Purification	Affinity-chromatography
Immunogen	A synthesized peptide derived from human p23
Description	Molecular chaperone that localizes to genomic response elements in a hormone-dependent manner and disrupts receptor-mediated transcriptional activation, by promoting disassembly of transcriptional regulatory complexes.
Storage Condition and Buffer	Rabbit IgG in phosphate buffered saline , pH 7.4, 150mM NaCl, 0.02% sodium azide and 50% glycerol. Store at +4°C short term. Store at -20°C long term. Avoid freeze / thaw cycle.

p23 Antibody - Protein Information

Name PTGES3

Synonyms P23, TEBP

Function

Cytosolic prostaglandin synthase that catalyzes the oxidoreduction of prostaglandin endoperoxide H2 (PGH2) to prostaglandin E2 (PGE2) (PubMed: [10922363](http://www.uniprot.org/citations/10922363)). Molecular chaperone that localizes to genomic response elements in a hormone-dependent manner and disrupts receptor-mediated transcriptional activation, by promoting disassembly of transcriptional regulatory complexes (PubMed: [11274138](http://www.uniprot.org/citations/11274138), PubMed: [12077419](http://www.uniprot.org/citations/12077419)). Facilitates HIF alpha proteins hydroxylation via interaction with

EGLN1/PHD2, leading to recruit EGLN1/PHD2 to the HSP90 pathway (PubMed:24711448).

Cellular Location

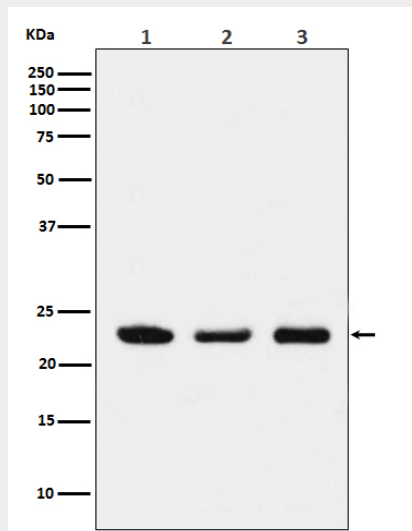
Cytoplasm {ECO:0000250|UniProtKB:Q3ZBF7}.

p23 Antibody - Protocols

Provided below are standard protocols that you may find useful for product applications.

- [Western Blot](#)
- [Blocking Peptides](#)
- [Dot Blot](#)
- [Immunohistochemistry](#)
- [Immunofluorescence](#)
- [Immunoprecipitation](#)
- [Flow Cytometry](#)
- [Cell Culture](#)

p23 Antibody - Images



Western blot analysis of p23 expression in (1) HeLa cell lysate; (2) NIH/3T3 cell lysate; (3) PC12 cell lysate.