

Citrate synthetase Antibody
Rabbit mAb
Catalog # AP91360**Specification**

Citrate synthetase Antibody - Product Information

Application	WB, IHC, FC, ICC
Primary Accession	O75390
Reactivity	Rat
Clonality	Monoclonal
Other Names	
Citrate synthase; Citrate synthase, mitochondrial; Cs;	
Isotype	Rabbit IgG
Host	Rabbit
Calculated MW	51712 Da

Citrate synthetase Antibody - Additional Information

Purification	Affinity-chromatography
Immunogen	A synthesized peptide derived from human Citrate synthetase
Description	Carbohydrate metabolism; tricarboxylic acid cycle; isocitrate from oxaloacetate: step 1/2.
Storage Condition and Buffer	Rabbit IgG in phosphate buffered saline , pH 7.4, 150mM NaCl, 0.02% sodium azide and 50% glycerol. Store at +4°C short term. Store at -20°C long term. Avoid freeze / thaw cycle.

Citrate synthetase Antibody - Protein Information**Name** CS**Function**

Key enzyme of the Krebs tricarboxylic acid cycle which catalyzes the synthesis of citrate from acetyl coenzyme A and oxaloacetate.

Cellular Location

Mitochondrion matrix {ECO:0000250|UniProtKB:P00889}

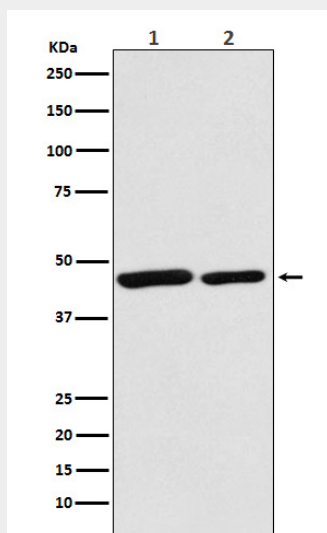
Citrate synthetase Antibody - Protocols

Provided below are standard protocols that you may find useful for product applications.

- [Western Blot](#)

- [Blocking Peptides](#)
- [Dot Blot](#)
- [Immunohistochemistry](#)
- [Immunofluorescence](#)
- [Immunoprecipitation](#)
- [Flow Cytometry](#)
- [Cell Culture](#)

Citrate synthetase Antibody - Images



Western blot analysis of Citrate synthetase expression in (1) HeLa cell lysate; (1) Mouse spleen lysate.