

MTA2 Antibody
Rabbit mAb
Catalog # AP91355

Specification

MTA2 Antibody - Product Information

Application	WB, IHC, FC, ICC
Primary Accession	O94776
Clonality	Monoclonal
Other Names	
Mata1l1; Metastasis associated gene 1 like 1; Metastasis associated gene family member 2; Mmta2; MTA1L1; p53 target protein in deacetylase complex; PID;	
Isotype	Rabbit IgG
Host	Rabbit
Calculated MW	75023 Da

MTA2 Antibody - Additional Information

Purification	Affinity-chromatography
Immunogen	A synthesized peptide derived from human MTA2
Description	The p53 tumor suppressor gene integrates numerous signals that control cell life and death. There are several proteins that are involved in the p53 pathway, including Chk2, p53R2, p53AIP1, Noxa, PIDD, and MTA2. The transcriptional activity of p53 is modulated by protein stability and acetylation.
Storage Condition and Buffer	Rabbit IgG in phosphate buffered saline , pH 7.4, 150mM NaCl, 0.02% sodium azide and 50% glycerol. Store at +4°C short term. Store at -20°C long term. Avoid freeze / thaw cycle.

MTA2 Antibody - Protein Information

Name MTA2

Synonyms MTA1L1, PID

Function

May function as a transcriptional coregulator (PubMed: [16428440](http://www.uniprot.org/citations/16428440), PubMed: [28977666](http://www.uniprot.org/citations/28977666)). Acts as a component of the histone deacetylase NuRD complex which participates in the remodeling of chromatin (PubMed: [16428440](http://www.uniprot.org/citations/16428440), PubMed: [28977666](http://www.uniprot.org/citations/28977666))

target="_blank">28977666).

Cellular Location

Nucleus {ECO:0000255|PROSITE-ProRule:PRU00512, ECO:0000255|PROSITE-ProRule:PRU00624, ECO:0000269|PubMed:28977666, ECO:0000269|PubMed:33283408}

Tissue Location

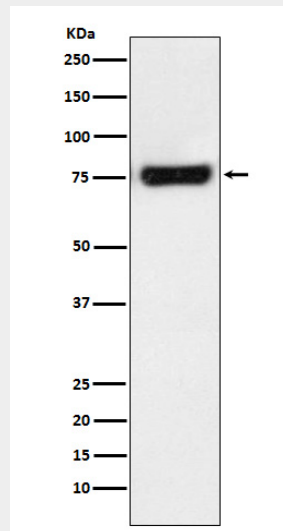
Widely expressed.

MTA2 Antibody - Protocols

Provided below are standard protocols that you may find useful for product applications.

- [Western Blot](#)
- [Blocking Peptides](#)
- [Dot Blot](#)
- [Immunohistochemistry](#)
- [Immunofluorescence](#)
- [Immunoprecipitation](#)
- [Flow Cytometry](#)
- [Cell Culture](#)

MTA2 Antibody - Images



Western blot analysis of MTA2 expression in HeLa cell lysate.