

PI3 Kinase p85 alpha Antibody
Rabbit mAb
Catalog # AP91345

Specification

PI3 Kinase p85 alpha Antibody - Product Information

Application	WB
Primary Accession	P27986
Reactivity	Rat
Clonality	Monoclonal

Other Names

GRB1; p85 alpha; PI3-kinase subunit p85-alpha; PI3K; PI3K regulatory subunit alpha; Pik3r1; PtdIns 3 kinase p85 alpha;

Isotype	Rabbit IgG
Host	Rabbit
Calculated MW	83598 Da

PI3 Kinase p85 alpha Antibody - Additional Information

Purification	Affinity-chromatography
Immunogen	A synthesized peptide derived from human PI3 Kinase p85 alpha
Description	Binds to activated (phosphorylated) protein-Tyr kinases, through its SH2 domain, and acts as an adapter, mediating the association of the p110 catalytic unit to the plasma membrane. Necessary for the insulin-stimulated increase in glucose uptake and glycogen synthesis in insulin-sensitive tissues.
Storage Condition and Buffer	Rabbit IgG in phosphate buffered saline , pH 7.4, 150mM NaCl, 0.02% sodium azide and 50% glycerol. Store at +4°C short term. Store at -20°C long term. Avoid freeze / thaw cycle.

PI3 Kinase p85 alpha Antibody - Protein Information

Name PIK3R1

Synonyms GRB1

Function

Binds to activated (phosphorylated) protein-Tyr kinases, through its SH2 domain, and acts as an adapter, mediating the association of the p110 catalytic unit to the plasma membrane. Necessary for the insulin-stimulated increase in glucose uptake and glycogen synthesis in insulin-sensitive tissues. Plays an important role in signaling in response to FGFR1, FGFR2, FGFR3, FGFR4, KITLG/SCF, KIT, PDGFRA and PDGFRB. Likewise, plays a role in ITGB2 signaling (PubMed:<a

[17626883](http://www.uniprot.org/citations/17626883), PubMed: [19805105](http://www.uniprot.org/citations/19805105), PubMed: [7518429](http://www.uniprot.org/citations/7518429)). Modulates the cellular response to ER stress by promoting nuclear translocation of XBP1 isoform 2 in a ER stress- and/or insulin-dependent manner during metabolic overloading in the liver and hence plays a role in glucose tolerance improvement (PubMed: [20348923](http://www.uniprot.org/citations/20348923)).

Tissue Location

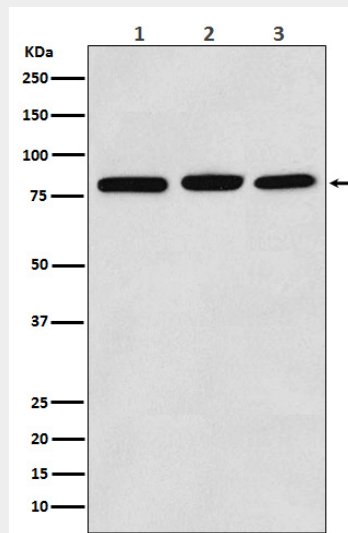
Isoform 2 is expressed in skeletal muscle and brain, and at lower levels in kidney and cardiac muscle. Isoform 2 and isoform 4 are present in skeletal muscle (at protein level)

PI3 Kinase p85 alpha Antibody - Protocols

Provided below are standard protocols that you may find useful for product applications.

- [Western Blot](#)
- [Blocking Peptides](#)
- [Dot Blot](#)
- [Immunohistochemistry](#)
- [Immunofluorescence](#)
- [Immunoprecipitation](#)
- [Flow Cytometry](#)
- [Cell Culture](#)

PI3 Kinase p85 alpha Antibody - Images



Western blot analysis of PI3 Kinase p85 alpha expression in (1) K562 cell lysate; (2) Raw 264.7 cell lysate; (3) C6 cell lysate.