

**ACVRL1 Antibody**  
Rabbit mAb  
Catalog # AP91344

## Specification

---

### ACVRL1 Antibody - Product Information

Application	WB
Primary Accession	<a href="#">P37023</a>
Reactivity	Rat
Clonality	Monoclonal
<b>Other Names</b>	
SKR3; Activin receptor-like kinase 1; ALK-1; TGF-B superfamily receptor type I; TSR-I; ACVRL1; ACVRLK1; ALK1;	
Isotype	Rabbit IgG
Host	Rabbit
Calculated MW	56124 Da

### ACVRL1 Antibody - Additional Information

Purification	Affinity-chromatography
Immunogen	A synthesized peptide derived from human ACVRL1
Description	On ligand binding, forms a receptor complex consisting of two type II and two type I transmembrane serine/threonine kinases. Type II receptors phosphorylate and activate type I receptors which autophosphorylate, then bind and activate SMAD transcriptional regulators. Receptor for TGF-beta. May bind activin as well.
Storage Condition and Buffer	Rabbit IgG in phosphate buffered saline , pH 7.4, 150mM NaCl, 0.02% sodium azide and 50% glycerol. Store at +4°C short term. Store at -20°C long term. Avoid freeze / thaw cycle.

### ACVRL1 Antibody - Protein Information

**Name** ACVRL1

**Synonyms** ACVRLK1, ALK1

#### Function

Type I receptor for TGF-beta family ligands BMP9/GDF2 and BMP10 and important regulator of normal blood vessel development. On ligand binding, forms a receptor complex consisting of two type II and two type I transmembrane serine/threonine kinases. Type II receptors phosphorylate and activate type I receptors which autophosphorylate, then bind and activate SMAD transcriptional regulators. May bind activin as well.

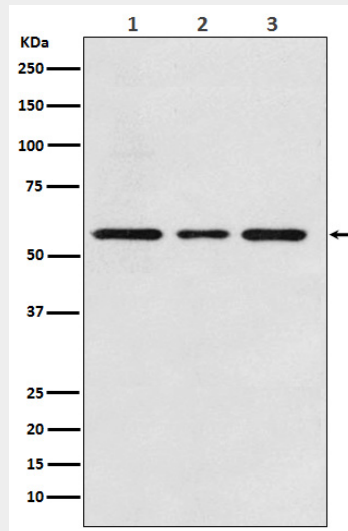
**Cellular Location**

Cell membrane; Single-pass type I membrane protein

**ACVRL1 Antibody - Protocols**

Provided below are standard protocols that you may find useful for product applications.

- [Western Blot](#)
- [Blocking Peptides](#)
- [Dot Blot](#)
- [Immunohistochemistry](#)
- [Immunofluorescence](#)
- [Immunoprecipitation](#)
- [Flow Cytometry](#)
- [Cell Culture](#)

**ACVRL1 Antibody - Images**

Western blot analysis of ACVRL1 expression in (1) Jurkat cell lysate; (2) Mouse kidney lysate; (3) Rat kidney lysate.