

Atg16L1 Antibody
Rabbit mAb
Catalog # AP91339

Specification

Atg16L1 Antibody - Product Information

Application	WB, IHC
Primary Accession	Q676U5
Reactivity	Rat
Clonality	Monoclonal
Other Names	
APG16 like 1; APG16L; APG16L beta; ATG16A; ATG16L; Atg16L1; IBD10; WD repeat domain 30; WDR30;	
Isotype	Rabbit IgG
Host	Rabbit
Calculated MW	68265 Da

Atg16L1 Antibody - Additional Information

Purification	Affinity-chromatography
Immunogen	A synthesized peptide derived from human Atg16L1
Description	Plays an essential role in autophagy: interacts with ATG12-ATG5 to mediate the conjugation of phosphatidylethanolamine (PE) to LC3 (MAP1LC3A, MAP1LC3B or MAP1LC3C), to produce a membrane-bound activated form of LC3 named LC3-II. Thereby, controls the elongation of the nascent autophagosomal membrane.
Storage Condition and Buffer	Rabbit IgG in phosphate buffered saline , pH 7.4, 150mM NaCl, 0.02% sodium azide and 50% glycerol. Store at +4°C short term. Store at -20°C long term. Avoid freeze / thaw cycle.

Atg16L1 Antibody - Protein Information

Name ATG16L1 {ECO:0000303|PubMed:17200669, ECO:0000312|HGNC:HGNC:21498}

Function

Plays an essential role in both canonical and non-canonical autophagy: interacts with ATG12-ATG5 to mediate the lipidation to ATG8 family proteins (MAP1LC3A, MAP1LC3B, MAP1LC3C, GABARAPL1, GABARAPL2 and GABARAP) (PubMed: [23376921](http://www.uniprot.org/citations/23376921) target="_blank">23376921, PubMed: [23392225](http://www.uniprot.org/citations/23392225) target="_blank">23392225, PubMed: [24553140](http://www.uniprot.org/citations/24553140) target="_blank">24553140, PubMed: [24954904](http://www.uniprot.org/citations/24954904) target="_blank">24954904, PubMed: [27273576](http://www.uniprot.org/citations/27273576) target="_blank">27273576)

target="_blank">27273576, PubMed:29317426, PubMed:30778222, PubMed:33909989). Acts as a molecular hub, coordinating autophagy pathways via distinct domains that support either canonical or non-canonical signaling (PubMed:29317426, PubMed:30778222). During canonical autophagy, interacts with ATG12-ATG5 to mediate the conjugation of phosphatidylethanolamine (PE) to ATG8 proteins, to produce a membrane-bound activated form of ATG8 (PubMed:23376921, PubMed:23392225, PubMed:24553140, PubMed:24954904, PubMed:27273576). Thereby, controls the elongation of the nascent autophagosomal membrane (PubMed:23376921, PubMed:23392225, PubMed:24553140, PubMed:24954904, PubMed:27273576). Also involved in non-canonical autophagy, a parallel pathway involving conjugation of ATG8 proteins to single membranes at endolysosomal compartments, probably by catalyzing conjugation of phosphatidylserine (PS) to ATG8 (PubMed:33909989). Non-canonical autophagy plays a key role in epithelial cells to limit lethal infection by influenza A (IAV) virus (By similarity). Regulates mitochondrial antiviral signaling (MAVS)-dependent type I interferon (IFN-I) production (PubMed:22749352, PubMed:25645662). Negatively regulates NOD1- and NOD2-driven inflammatory cytokine response (PubMed:24238340). Instead, promotes an autophagy-dependent antibacterial pathway together with NOD1 or NOD2 (PubMed:20637199). Plays a role in regulating morphology and function of Paneth cell (PubMed:18849966).

Cellular Location

Cytoplasm. Preautophagosomal structure membrane; Peripheral membrane protein. Endosome membrane; Peripheral membrane protein. Lysosome membrane; Peripheral membrane protein. Note=Recruited to omegasomes membranes by WIPI2 (By similarity). Omegasomes are endoplasmic reticulum connected structures at the origin of preautophagosomal structures (By similarity) Localized to preautophagosomal structure (PAS) where it is involved in the membrane targeting of ATG5 (By similarity). Localizes also to discrete punctae along the ciliary axoneme (By similarity). Upon activation of non-canonical autophagy, recruited to single-membrane endolysosomal compartments (PubMed:29317426) {ECO:0000250|UniProtKB:Q8C0J2, ECO:0000269|PubMed:29317426}

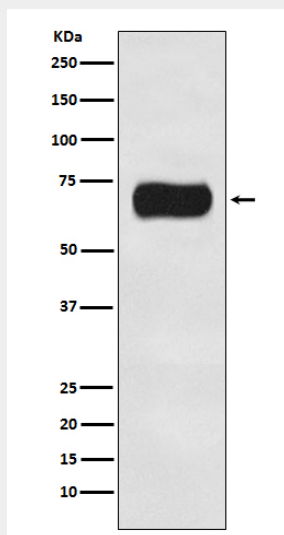
Atg16L1 Antibody - Protocols

Provided below are standard protocols that you may find useful for product applications.

- [Western Blot](#)
- [Blocking Peptides](#)
- [Dot Blot](#)
- [Immunohistochemistry](#)

- [Immunofluorescence](#)
- [Immunoprecipitation](#)
- [Flow Cytometry](#)
- [Cell Culture](#)

Atg16L1 Antibody - Images



Western blot analysis of Atg16L1 expression in HeLa cell lysate.