

**Atg4C Antibody**  
Rabbit mAb  
Catalog # AP91337

## Specification

---

### Atg4C Antibody - Product Information

Application **WB, IHC, FC**  
Primary Accession [O96DT6](#)  
Clonality **Monoclonal**  
**Other Names**  
APG4C; ATG4C; cysteine endopeptidase; AUT like 1;

Isotype **Rabbit IgG**  
Host **Rabbit**  
Calculated MW **52497 Da**

### Atg4C Antibody - Additional Information

Purification **Affinity-chromatography**  
Immunogen **A synthesized peptide derived from human Atg4C**  
Description **Cysteine protease required for autophagy, which cleaves the C-terminal part of either MAP1LC3, GABARAPL2 or GABARAP, allowing the liberation of form I. A subpopulation of form I is subsequently converted to a smaller form (form II). Form II, with a revealed C-terminal glycine, is considered to be the phosphatidylethanolamine (PE)-conjugated form, and has the capacity for the binding to autophagosomes.**  
Storage Condition and Buffer **Rabbit IgG in phosphate buffered saline , pH 7.4, 150mM NaCl, 0.02% sodium azide and 50% glycerol. Store at +4°C short term. Store at -20°C long term. Avoid freeze / thaw cycle.**

### Atg4C Antibody - Protein Information

**Name** ATG4C {ECO:0000303|PubMed:21177865, ECO:0000312|HGNC:HGNC:16040}

#### Function

Cysteine protease that plays a key role in autophagy by mediating both proteolytic activation and delipidation of ATG8 family proteins (PubMed:<a href="http://www.uniprot.org/citations/21177865" target="\_blank">21177865</a>, PubMed:<a href="http://www.uniprot.org/citations/29458288" target="\_blank">29458288</a>, PubMed:<a href="http://www.uniprot.org/citations/30661429" target="\_blank">30661429</a>). The protease activity is required for proteolytic activation of ATG8 family proteins: cleaves the C-terminal amino

acid of ATG8 proteins MAP1LC3 and GABARAPL2, to reveal a C-terminal glycine (PubMed:<a href="http://www.uniprot.org/citations/21177865" target="\_blank">21177865</a>). Exposure of the glycine at the C-terminus is essential for ATG8 proteins conjugation to phosphatidylethanolamine (PE) and insertion to membranes, which is necessary for autophagy (By similarity). In addition to the protease activity, also mediates delipidation of ATG8 family proteins (PubMed:<a href="http://www.uniprot.org/citations/29458288" target="\_blank">29458288</a>, PubMed:<a href="http://www.uniprot.org/citations/33909989" target="\_blank">33909989</a>). Catalyzes delipidation of PE-conjugated forms of ATG8 proteins during macroautophagy (PubMed:<a href="http://www.uniprot.org/citations/29458288" target="\_blank">29458288</a>, PubMed:<a href="http://www.uniprot.org/citations/33909989" target="\_blank">33909989</a>). Compared to ATG4B, the major protein for proteolytic activation of ATG8 proteins, shows weaker ability to cleave the C-terminal amino acid of ATG8 proteins, while it displays stronger delipidation activity (PubMed:<a href="http://www.uniprot.org/citations/29458288" target="\_blank">29458288</a>). In contrast to other members of the family, weakly or not involved in phagophore growth during mitophagy (PubMed:<a href="http://www.uniprot.org/citations/33773106" target="\_blank">33773106</a>).

#### Cellular Location

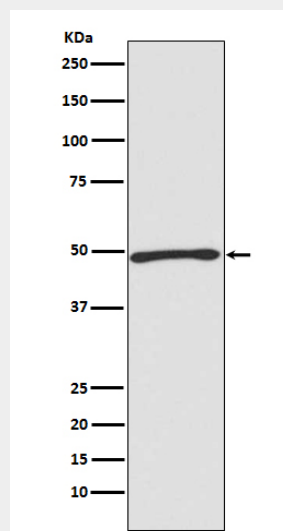
Cytoplasm {ECO:0000250|UniProtKB:Q8BGE6}.

#### Atg4C Antibody - Protocols

Provided below are standard protocols that you may find useful for product applications.

- [Western Blot](#)
- [Blocking Peptides](#)
- [Dot Blot](#)
- [Immunohistochemistry](#)
- [Immunofluorescence](#)
- [Immunoprecipitation](#)
- [Flow Cytometry](#)
- [Cell Culture](#)

#### Atg4C Antibody - Images



Western blot analysis of Atg4C expression in Jurkat cell lysate.