

BNIP1 Antibody
Rabbit mAb
Catalog # AP91333**Specification**

BNIP1 Antibody - Product InformationApplication
Primary Accession
Reactivity
Clonality**WB, IHC**
[Q12981](#)
Rat
Monoclonal**Other Names**BCL2 adenovirus E1B 19kD interacting protein 1; BNIP1; Nip1; sec20; SEC20L;
Transformation-related gene 8 protein; TRG8; Vesicle transport protein SEC20;Isotype
Host
Calculated MW**Rabbit IgG**
Rabbit
26132 Da**BNIP1 Antibody - Additional Information**Purification
Immunogen**Affinity-chromatography**
A synthesized peptide derived from human BNIP1

Description

SNARE that may be involved in targeting and fusion of Golgi-derived retrograde transport vesicles with the ER. Required for maintenance of ER network. Implicated in the suppression of cell death.

Storage Condition and Buffer

Rabbit IgG in phosphate buffered saline , pH 7.4, 150mM NaCl, 0.02% sodium azide and 50% glycerol. Store at +4°C short term. Store at -20°C long term. Avoid freeze / thaw cycle.**BNIP1 Antibody - Protein Information****Name** BNIP1**Synonyms** NIP1, SEC20L**Function**

As part of a SNARE complex may be involved in endoplasmic reticulum membranes fusion and be required for the maintenance of endoplasmic reticulum organization (PubMed: 15272311). Also plays a role in apoptosis (PubMed: 15272311, PubMed: 23896122, PubMed: 7954800). It is for instance required for endoplasmic reticulum stress-induced apoptosis (PubMed: 23896122).

target="_blank">23896122). As a substrate of RNF185 interacting with SQSTM1, might also be involved in mitochondrial autophagy (Probable).

Cellular Location

Endoplasmic reticulum membrane; Single-pass type IV membrane protein. Mitochondrion membrane; Single-pass type IV membrane protein. Note=Localization to the mitochondrion is regulated by RNF186.

Tissue Location

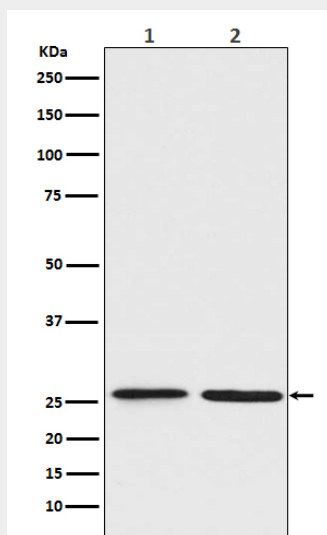
Isoform 1 is highly expressed in heart, brain, liver skeletal muscle and pancreas. Isoform 3 is moderately expressed in placenta, lung and kidney. Isoform 4 is highly expressed in testis and small intestine.

BNIP1 Antibody - Protocols

Provided below are standard protocols that you may find useful for product applications.

- [Western Blot](#)
- [Blocking Peptides](#)
- [Dot Blot](#)
- [Immunohistochemistry](#)
- [Immunofluorescence](#)
- [Immunoprecipitation](#)
- [Flow Cytometry](#)
- [Cell Culture](#)

BNIP1 Antibody - Images



Western blot analysis of BNIP1 expression in (1) Jurkat cell lysate; (2) C6 cell lysate.