

MYH11 Antibody
Rabbit mAb
Catalog # AP91328

Specification

MYH11 Antibody - Product Information

Application	WB, IHC, ICC
Primary Accession	P35749
Clonality	Monoclonal
Other Names	
AAT4; FAA4; MYH11; Myosin 11; Myosin heavy chain 11; Myosin heavy chain smooth muscle isoform; Myosin heavy polypeptide 11 smooth muscle; SMHC; SMMHC;	
Isotype	Rabbit IgG
Host	Rabbit
Calculated MW	227339 Da

MYH11 Antibody - Additional Information

Purification	Affinity-chromatography
Immunogen	A synthesized peptide derived from human MYH11
Description	Muscle contraction.
Storage Condition and Buffer	Rabbit IgG in phosphate buffered saline , pH 7.4, 150mM NaCl, 0.02% sodium azide and 50% glycerol. Store at +4°C short term. Store at -20°C long term. Avoid freeze / thaw cycle.

MYH11 Antibody - Protein Information

Name MYH11

Synonyms KIAA0866

Function
Muscle contraction.

Cellular Location
Melanosome. Note=Identified by mass spectrometry in melanosome fractions from stage I to stage IV. Thick filaments of the myofibrils

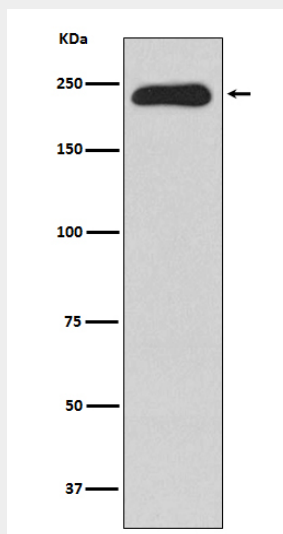
Tissue Location
Smooth muscle; expressed in the umbilical artery, bladder, esophagus and trachea. Isoform 1 is mostly found in slowly contracting tonic muscles.

MYH11 Antibody - Protocols

Provided below are standard protocols that you may find useful for product applications.

- [Western Blot](#)
- [Blocking Peptides](#)
- [Dot Blot](#)
- [Immunohistochemistry](#)
- [Immunofluorescence](#)
- [Immunoprecipitation](#)
- [Flow Cytometry](#)
- [Cell Culture](#)

MYH11 Antibody - Images



Western blot analysis of MYH11 expression in Human testis lysate.