

**CRYAB Antibody**  
**Rabbit mAb**  
**Catalog # AP91327****Specification**

---

**CRYAB Antibody - Product Information**

Application	WB, IHC, ICC, IP
Primary Accession	<a href="#">P02511</a>
Reactivity	Rat
Clonality	Monoclonal

**Other Names**

AACRYA; Alpha B crystallin; Alpha-crystallin B chain; CRYA2; Cryab; Crystallin alpha B; CTPP2; Heat shock 20 kD like protein; HspB5;

Isotype	Rabbit IgG
Host	Rabbit
Calculated MW	20159 Da

**CRYAB Antibody - Additional Information**

Purification	Affinity-chromatography
Immunogen	A synthesized peptide derived from human CRYAB
Description	May contribute to the transparency and refractive index of the lens.
Storage Condition and Buffer	Rabbit IgG in phosphate buffered saline , pH 7.4, 150mM NaCl, 0.02% sodium azide and 50% glycerol. Store at +4°C short term. Store at -20°C long term. Avoid freeze / thaw cycle.

**CRYAB Antibody - Protein Information**

**Name** CRYAB ([HGNC:2389](#))

**Synonyms** CRYA2, HSPB5

**Function**

May contribute to the transparency and refractive index of the lens. Has chaperone-like activity, preventing aggregation of various proteins under a wide range of stress conditions. In lens epithelial cells, stabilizes the ATP6V1A protein, preventing its degradation by the proteasome (By similarity).

**Cellular Location**

Cytoplasm. Nucleus Secreted. Lysosome {ECO:0000250|UniProtKB:P23927}. Note=Translocates to the nucleus during heat shock and resides in sub-nuclear structures known as SC35 speckles or nuclear splicing speckles (PubMed:19464326). Localizes at the Z- bands and the intercalated disk in cardiomyocytes (PubMed:28493373) Can be secreted; the secretion is dependent on protein unfolding and facilitated by the cargo receptor TMED10; it results in protein translocation from the

cytoplasm into the ERGIC (endoplasmic reticulum- Golgi intermediate compartment) followed by vesicle entry and secretion (PubMed:32272059).

#### **Tissue Location**

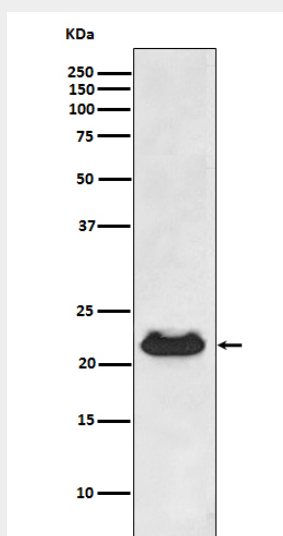
Lens as well as other tissues (PubMed:2387586, PubMed:838078). Expressed in myocardial tissue (PubMed:28493373)

#### **CRYAB Antibody - Protocols**

Provided below are standard protocols that you may find useful for product applications.

- [Western Blot](#)
- [Blocking Peptides](#)
- [Dot Blot](#)
- [Immunohistochemistry](#)
- [Immunofluorescence](#)
- [Immunoprecipitation](#)
- [Flow Cytometry](#)
- [Cell Culture](#)

#### **CRYAB Antibody - Images**



Western blot analysis of CRYAB expression in human fetal heart lysate.