

**GLUT3 Antibody**  
Rabbit mAb  
Catalog # AP91326

## Specification

---

### GLUT3 Antibody - Product Information

Application	WB
Primary Accession	<a href="#">P11169</a>
Reactivity	Rat
Clonality	Monoclonal
<b>Other Names</b>	
brain; Glucose transporter type 3; GLUT3; Slc2a3;	
Isotype	Rabbit IgG
Host	Rabbit
Calculated MW	53924 Da

### GLUT3 Antibody - Additional Information

Purification	Affinity-chromatography
Immunogen	A synthesized peptide derived from human GLUT3
Description	Facilitative glucose transporter. Probably a neuronal glucose transporter.
Storage Condition and Buffer	Rabbit IgG in phosphate buffered saline , pH 7.4, 150mM NaCl, 0.02% sodium azide and 50% glycerol. Store at +4°C short term. Store at -20°C long term. Avoid freeze / thaw cycle.

### GLUT3 Antibody - Protein Information

Name SLC2A3 ([HGNC:11007](#))

#### Function

Facilitative glucose transporter (PubMed:[26176916](http://www.uniprot.org/citations/26176916), PubMed:[32860739](http://www.uniprot.org/citations/32860739), PubMed:[9477959](http://www.uniprot.org/citations/9477959)). Can also mediate the uptake of various other monosaccharides across the cell membrane (PubMed:[26176916](http://www.uniprot.org/citations/26176916), PubMed:[9477959](http://www.uniprot.org/citations/9477959)). Mediates the uptake of glucose, 2- deoxyglucose, galactose, mannose, xylose and fucose, and probably also dehydroascorbate (PubMed:[26176916](http://www.uniprot.org/citations/26176916), PubMed:[9477959](http://www.uniprot.org/citations/9477959)). Does not mediate fructose transport (PubMed:[26176916](http://www.uniprot.org/citations/26176916), PubMed:[9477959](http://www.uniprot.org/citations/9477959)). Required for mesendoderm differentiation (By similarity).

### Cellular Location

Cell membrane; Multi-pass membrane protein. Perikaryon {ECO:0000250|UniProtKB:Q07647}. Cell projection {ECO:0000250|UniProtKB:Q07647}. Note=Localized to densely spaced patches along neuronal processes. {ECO:0000250|UniProtKB:Q07647}

### Tissue Location

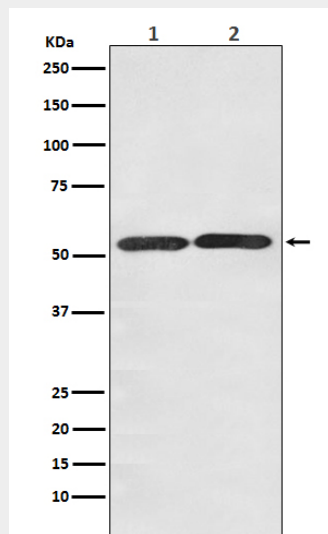
Highly expressed in brain (PubMed:8457197). Expressed in many tissues.

### GLUT3 Antibody - Protocols

Provided below are standard protocols that you may find useful for product applications.

- [Western Blot](#)
- [Blocking Peptides](#)
- [Dot Blot](#)
- [Immunohistochemistry](#)
- [Immunofluorescence](#)
- [Immunoprecipitation](#)
- [Flow Cytometry](#)
- [Cell Culture](#)

### GLUT3 Antibody - Images



Western blot analysis of GLUT3 expression in (1) HepG2 cell lysate; (2) NIH/3T3 cell lysate.