

gamma Sarcoglycan Antibody
Rabbit mAb
Catalog # AP91318

Specification

gamma Sarcoglycan Antibody - Product Information

Application	WB, IHC, IP
Primary Accession	Q13326
Clonality	Monoclonal
Other Names	
35DAG; DAGA4; DMDA; Gamma-sarcoglycan; LGMD2C; MAM; Sarcoglycan gamma; SCARMD2; SCG3; SGCG; TYPE;	
Isotype	Rabbit IgG
Host	Rabbit
Calculated MW	32379 Da

gamma Sarcoglycan Antibody - Additional Information

Purification	Affinity-chromatography
Immunogen	A synthesized peptide derived from human gamma Sarcoglycan
Description	Component of the sarcoglycan complex, a subcomplex of the dystrophin-glycoprotein complex which forms a link between the F-actin cytoskeleton and the extracellular matrix.
Storage Condition and Buffer	Rabbit IgG in phosphate buffered saline , pH 7.4, 150mM NaCl, 0.02% sodium azide and 50% glycerol. Store at +4°C short term. Store at -20°C long term. Avoid freeze / thaw cycle.

gamma Sarcoglycan Antibody - Protein Information

Name SGCG

Function

Component of the sarcoglycan complex, a subcomplex of the dystrophin-glycoprotein complex which forms a link between the F-actin cytoskeleton and the extracellular matrix.

Cellular Location

Cell membrane, sarcolemma; Single-pass type II membrane protein. Cytoplasm, cytoskeleton

Tissue Location

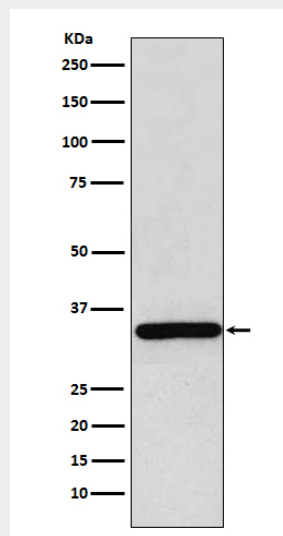
Expressed in skeletal and heart muscle.

gamma Sarcoglycan Antibody - Protocols

Provided below are standard protocols that you may find useful for product applications.

- [Western Blot](#)
- [Blocking Peptides](#)
- [Dot Blot](#)
- [Immunohistochemistry](#)
- [Immunofluorescence](#)
- [Immunoprecipitation](#)
- [Flow Cytometry](#)
- [Cell Culture](#)

gamma Sarcoglycan Antibody - Images



Western blot analysis of gamma Sarcoglycan expression in Human skeletal muscle lysate.