

**CD276 Antibody**  
Rabbit mAb  
Catalog # AP91316

## Specification

---

### CD276 Antibody - Product Information

Application	<b>WB, FC, IP</b>
Primary Accession	<a href="#">O5ZPR3</a>
Clonality	<b>Monoclonal</b>
<b>Other Names</b>	
4Ig B7 H3; B7 homolog 3; B7H3; B7RP-2; CD276 antigen; CD276 molecule;	

Isotype	<b>Rabbit IgG</b>
Host	<b>Rabbit</b>
Calculated MW	<b>57235 Da</b>

### CD276 Antibody - Additional Information

Purification	<b>Affinity-chromatography</b>
Immunogen	<b>A synthesized peptide derived from human CD276</b>
Description	<b>May participate in the regulation of T-cell-mediated immune response. May play a protective role in tumor cells by inhibiting natural-killer mediated cell lysis as well as a role of marker for detection of neuroblastoma cells. May be involved in the development of acute and chronic transplant rejection and in the regulation of lymphocytic activity at mucosal surfaces.</b>
Storage Condition and Buffer	<b>Rabbit IgG in phosphate buffered saline , pH 7.4, 150mM NaCl, 0.02% sodium azide and 50% glycerol. Store at +4°C short term. Store at -20°C long term. Avoid freeze / thaw cycle.</b>

### CD276 Antibody - Protein Information

**Name** CD276

**Synonyms** B7H3

#### **Function**

May participate in the regulation of T-cell-mediated immune response. May play a protective role in tumor cells by inhibiting natural-killer mediated cell lysis as well as a role of marker for detection of neuroblastoma cells. May be involved in the development of acute and chronic transplant rejection and in the regulation of lymphocytic activity at mucosal surfaces. Could also play a key role in providing the placenta and fetus with a suitable immunological environment

throughout pregnancy. Both isoform 1 and isoform 2 appear to be redundant in their ability to modulate CD4 T-cell responses. Isoform 2 is shown to enhance the induction of cytotoxic T-cells and selectively stimulates interferon gamma production in the presence of T-cell receptor signaling.

#### **Cellular Location**

Membrane; Single-pass type I membrane protein

#### **Tissue Location**

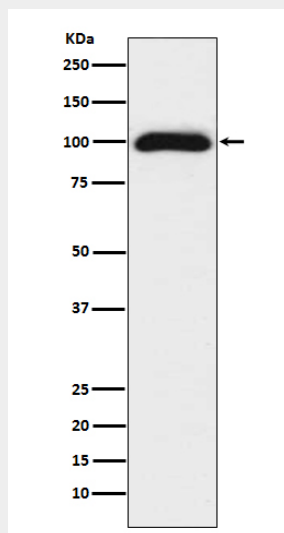
Ubiquitous but not detectable in peripheral blood lymphocytes or granulocytes. Weakly expressed in resting monocytes Expressed in dendritic cells derived from monocytes. Expressed in epithelial cells of sinonasal tissue. Expressed in extravillous trophoblast cells and Hofbauer cells of the first trimester placenta and term placenta.

### **CD276 Antibody - Protocols**

Provided below are standard protocols that you may find useful for product applications.

- [Western Blot](#)
- [Blocking Peptides](#)
- [Dot Blot](#)
- [Immunohistochemistry](#)
- [Immunofluorescence](#)
- [Immunoprecipitation](#)
- [Flow Cytometry](#)
- [Cell Culture](#)

### **CD276 Antibody - Images**



Western blot analysis of CD276 expression in 293T cell lysate.