

**Calpain 1 Antibody**  
**Rabbit mAb**  
**Catalog # AP91313****Specification**

---

**Calpain 1 Antibody - Product Information**

Application	<b>WB, IHC, FC, ICC</b>
Primary Accession	<a href="#">P07384</a>
Reactivity	<b>Rat</b>
Clonality	<b>Monoclonal</b>

**Other Names**

Calpain-1 catalytic subunit; CANP; CANP small subunit; CANPL1; CAPN1; Micromolar Calpain; Mu Calpain; muCANP;

Isotype	<b>Rabbit IgG</b>
Host	<b>Rabbit</b>
Calculated MW	<b>81890 Da</b>

**Calpain 1 Antibody - Additional Information**

Purification	<b>Affinity-chromatography</b>
Immunogen	<b>A synthesized peptide derived from human Calpain 1</b>
Description	<b>Calcium-regulated non-lysosomal thiol-protease which catalyze limited proteolysis of substrates involved in cytoskeletal remodeling and signal transduction.</b>
Storage Condition and Buffer	<b>Rabbit IgG in phosphate buffered saline , pH 7.4, 150mM NaCl, 0.02% sodium azide and 50% glycerol. Store at +4°C short term. Store at -20°C long term. Avoid freeze / thaw cycle.</b>

**Calpain 1 Antibody - Protein Information**

**Name** CAPN1 ([HGNC:1476](#))

**Synonyms** CANPL1

**Function**

Calcium-regulated non-lysosomal thiol-protease which catalyzes limited proteolysis of substrates involved in cytoskeletal remodeling and signal transduction (PubMed:[19617626](http://www.uniprot.org/citations/19617626), PubMed:[21531719](http://www.uniprot.org/citations/21531719), PubMed:[2400579](http://www.uniprot.org/citations/2400579)). Proteolytically cleaves CTBP1 at 'Asn-375', 'Gly-387' and 'His-409' (PubMed:[23707407](http://www.uniprot.org/citations/23707407)). Cleaves and activates caspase-7 (CASP7) (PubMed:[19617626](http://www.uniprot.org/citations/19617626))

target="\_blank">19617626</a>).

#### Cellular Location

Cytoplasm. Cell membrane. Note=Translocates to the plasma membrane upon Ca(2+) binding. In granular keratinocytes and in lower corneocytes, colocalizes with FLG and FLG2 (PubMed:21531719)

#### Tissue Location

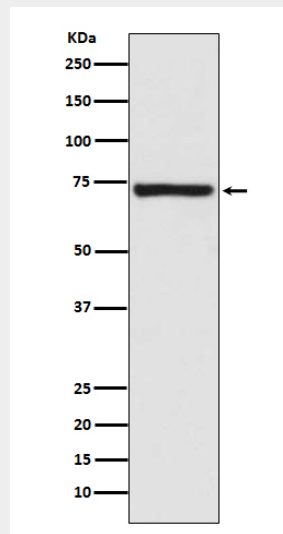
Ubiquitous.

### Calpain 1 Antibody - Protocols

Provided below are standard protocols that you may find useful for product applications.

- [Western Blot](#)
- [Blocking Peptides](#)
- [Dot Blot](#)
- [Immunohistochemistry](#)
- [Immunofluorescence](#)
- [Immunoprecipitation](#)
- [Flow Cytometry](#)
- [Cell Culture](#)

### Calpain 1 Antibody - Images



Western blot analysis of Calpain 1 expression in Human fetal kidney lysate.