

MRP1 Antibody
Rabbit mAb
Catalog # AP91308

Specification

MRP1 Antibody - Product Information

Application	WB, FC
Primary Accession	P33527
Clonality	Monoclonal
Other Names	
ABC29; Abcc1; GSX; Leukotriene C(4) transporter; LTC4 transporter; MRP1;	

Isotype	Rabbit IgG
Host	Rabbit
Calculated MW	171591 Da

MRP1 Antibody - Additional Information

Purification	Affinity-chromatography
Immunogen	A synthesized peptide derived from human MRP1
Description	Mediates export of organic anions and drugs from the cytoplasm. Mediates ATP-dependent transport of glutathione and glutathione conjugates, leukotriene C4, estradiol-17-beta-o-glucuronide, methotrexate, antiviral drugs and other xenobiotics. Confers resistance to anticancer drugs. Hydrolyzes ATP with low efficiency.
Storage Condition and Buffer	Rabbit IgG in phosphate buffered saline , pH 7.4, 150mM NaCl, 0.02% sodium azide and 50% glycerol. Store at +4°C short term. Store at -20°C long term. Avoid freeze / thaw cycle.

MRP1 Antibody - Protein Information

Name ABCC1 ([HGNC:51](#))

Synonyms MRP, MRP1

Function

Mediates export of organic anions and drugs from the cytoplasm (PubMed:[10064732](http://www.uniprot.org/citations/10064732), PubMed:[11114332](http://www.uniprot.org/citations/11114332), PubMed:[16230346](http://www.uniprot.org/citations/16230346), PubMed:[7961706](http://www.uniprot.org/citations/7961706), PubMed:[9281595](http://www.uniprot.org/citations/9281595)). Mediates

ATP-dependent transport of glutathione and glutathione conjugates, leukotriene C4, estradiol-17-beta-o-glucuronide, methotrexate, antiviral drugs and other xenobiotics (PubMed:10064732, PubMed:11114332, PubMed:16230346, PubMed:7961706, PubMed:9281595). Confers resistance to anticancer drugs by decreasing accumulation of drug in cells, and by mediating ATP- and GSH-dependent drug export (PubMed:9281595). Hydrolyzes ATP with low efficiency (PubMed:16230346). Catalyzes the export of sphingosine 1-phosphate from mast cells independently of their degranulation (PubMed:17050692). Participates in inflammatory response by allowing export of leukotriene C4 from leukotriene C4-synthesizing cells (By similarity). Mediates ATP- dependent, GSH-independent cyclic GMP-AMP (cGAMP) export (PubMed:36070769). Thus, by limiting intracellular cGAMP concentrations negatively regulates the cGAS-STING pathway (PubMed:36070769).

Cellular Location

Cell membrane; Multi-pass membrane protein {ECO:0000255|PROSITE-ProRule:PRU00441, ECO:0000269|PubMed:16230346}

Tissue Location

Lung, testis and peripheral blood mononuclear cells

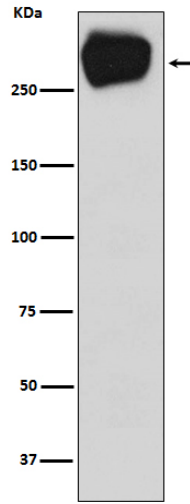
MRP1 Antibody - Protocols

Provided below are standard protocols that you may find useful for product applications.

- [Western Blot](#)
- [Blocking Peptides](#)
- [Dot Blot](#)
- [Immunohistochemistry](#)
- [Immunofluorescence](#)
- [Immunoprecipitation](#)
- [Flow Cytometry](#)
- [Cell Culture](#)

MRP1 Antibody - Images





Western blot analysis of MRP1 expression in A431 cell lysate.