

PIAS1 + PIAS2 Antibody
Rabbit mAb
Catalog # AP91305**Specification**

PIAS1 + PIAS2 Antibody - Product Information

Application	WB, IHC, FC, ICC, IP
Primary Accession	O75925/O75928
Reactivity	Rat
Clonality	Monoclonal
Other Names	
PIAS1; PIAS2;	
Isotype	Rabbit IgG
Host	Rabbit
Calculated MW	76kDa KDa

PIAS1 + PIAS2 Antibody - Additional Information

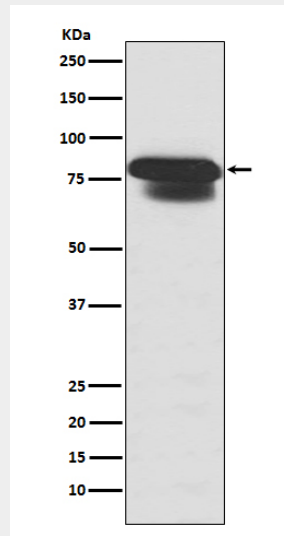
Purification	Affinity-chromatography
Immunogen	A synthesized peptide derived from human PIAS1
Description	This proteins are involved in the pathway protein sumoylation, which is part of Protein modification.
Storage Condition and Buffer	Rabbit IgG in phosphate buffered saline , pH 7.4, 150mM NaCl, 0.02% sodium azide and 50% glycerol. Store at +4°C short term. Store at -20°C long term. Avoid freeze / thaw cycle.

PIAS1 + PIAS2 Antibody - Protein Information**PIAS1 + PIAS2 Antibody - Protocols**

Provided below are standard protocols that you may find useful for product applications.

- [Western Blot](#)
- [Blocking Peptides](#)
- [Dot Blot](#)
- [Immunohistochemistry](#)
- [Immunofluorescence](#)
- [Immunoprecipitation](#)
- [Flow Cytometry](#)
- [Cell Culture](#)

PIAS1 + PIAS2 Antibody - Images



Western blot analysis of PIAS1+PIAS2+PIAS3 expression in HepG2 cell lysate.