

**Involucrin Antibody**  
Rabbit mAb  
Catalog # AP91295**Specification**

---

**Involucrin Antibody - Product Information**

Application	WB, IHC, FC
Primary Accession	<a href="#">P07476</a>
Reactivity	Rat
Clonality	Monoclonal
<b>Other Names</b>	
Involucrin; IVL;	
Isotype	Rabbit IgG
Host	Rabbit
Calculated MW	68479 Da

**Involucrin Antibody - Additional Information**

Purification	Affinity-chromatography
Immunogen	A synthesized peptide derived from human Involucrin
Description	Part of the insoluble cornified cell envelope (CE) of stratified squamous epithelia.
Storage Condition and Buffer	Rabbit IgG in phosphate buffered saline , pH 7.4, 150mM NaCl, 0.02% sodium azide and 50% glycerol. Store at +4°C short term. Store at -20°C long term. Avoid freeze / thaw cycle.

**Involucrin Antibody - Protein Information****Name** IVL**Function**

Part of the insoluble cornified cell envelope (CE) of stratified squamous epithelia.

**Cellular Location**

Cytoplasm. Note=Constituent of the scaffolding of the cornified envelope

**Tissue Location**

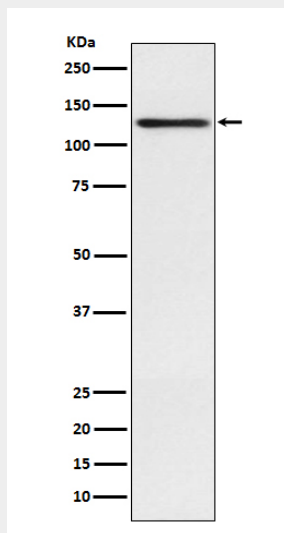
Keratinocytes of epidermis and other stratified squamous epithelia

**Involucrin Antibody - Protocols**

Provided below are standard protocols that you may find useful for product applications.

- [Western Blot](#)
- [Blocking Peptides](#)
- [Dot Blot](#)
- [Immunohistochemistry](#)
- [Immunofluorescence](#)
- [Immunoprecipitation](#)
- [Flow Cytometry](#)
- [Cell Culture](#)

### Involucrin Antibody - Images



Western blot analysis of Involucrin expression in A431 cell lysate.