

**LOX Antibody**  
Rabbit mAb  
Catalog # AP91294

## Specification

---

### LOX Antibody - Product Information

Application	WB, IHC, FC, ICC, IP
Primary Accession	<a href="#">P28300</a>
Reactivity	Rat
Clonality	Monoclonal
<b>Other Names</b>	
lox; LYOX; Lysyl oxidase; Protein lysine 6 oxidase;	
Isotype	Rabbit IgG
Host	Rabbit
Calculated MW	46944 Da

### LOX Antibody - Additional Information

Purification	Affinity-chromatography
Immunogen	A synthesized peptide derived from human LOX
Description	Responsible for the post-translational oxidative deamination of peptidyl lysine residues in precursors to fibrous collagen and elastin. In addition to cross-linking of extracellular matrix proteins, may have a direct role in tumor suppression.
Storage Condition and Buffer	Rabbit IgG in phosphate buffered saline , pH 7.4, 150mM NaCl, 0.02% sodium azide and 50% glycerol. Store at +4°C short term. Store at -20°C long term. Avoid freeze / thaw cycle.

### LOX Antibody - Protein Information

**Name** LOX

#### Function

Responsible for the post-translational oxidative deamination of peptidyl lysine residues in precursors to fibrous collagen and elastin (PubMed:<a href="http://www.uniprot.org/citations/26838787" target="\_blank">26838787</a>). Regulator of Ras expression. May play a role in tumor suppression. Plays a role in the aortic wall architecture (By similarity).

#### Cellular Location

Secreted. Secreted, extracellular space

#### Tissue Location

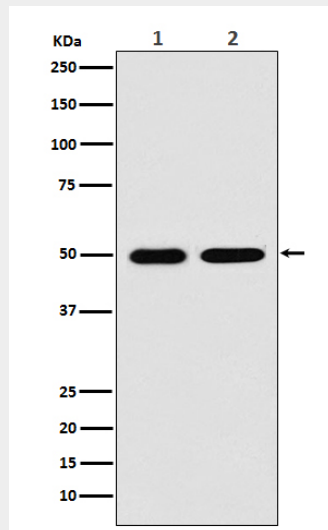
Heart, placenta, skeletal muscle, kidney, lung and pancreas.

### LOX Antibody - Protocols

Provided below are standard protocols that you may find useful for product applications.

- [Western Blot](#)
- [Blocking Peptides](#)
- [Dot Blot](#)
- [Immunohistochemistry](#)
- [Immunofluorescence](#)
- [Immunoprecipitation](#)
- [Flow Cytometry](#)
- [Cell Culture](#)

### LOX Antibody - Images



Western blot analysis of LOX expression in (1) Jurkat cell lysate; (2) Mouse brain lysate.