

GCET1 Antibody
Rabbit mAb
Catalog # AP91293

Specification

GCET1 Antibody - Product Information

Application	WB
Primary Accession	Q86WD7
Reactivity	Rat
Clonality	Monoclonal
Other Names	
Centerin; GCET1; Seprin A9; SERPINA11; SERPINA11b; Serpina9;	
Isotype	Rabbit IgG
Host	Rabbit
Calculated MW	46557 Da

GCET1 Antibody - Additional Information

Purification	Affinity-chromatography
Immunogen	A synthesized peptide derived from human GCET1
Description	Protease inhibitor that inhibits trypsin and trypsin-like serine proteases (in vitro). Inhibits plasmin and thrombin with lower efficiency (in vitro).
Storage Condition and Buffer	Rabbit IgG in phosphate buffered saline , pH 7.4, 150mM NaCl, 0.02% sodium azide and 50% glycerol. Store at +4°C short term. Store at -20°C long term. Avoid freeze / thaw cycle.

GCET1 Antibody - Protein Information

Name SERPINA9

Synonyms GCET1, SERPINA11

Function

Protease inhibitor that inhibits trypsin and trypsin-like serine proteases (in vitro). Inhibits plasmin and thrombin with lower efficiency (in vitro).

Cellular Location

[Isoform 1]: Secreted. [Isoform 3]: Cytoplasm. [Isoform 5]: Cytoplasm. [Isoform 7]: Membrane; Single-pass type II membrane protein

Tissue Location

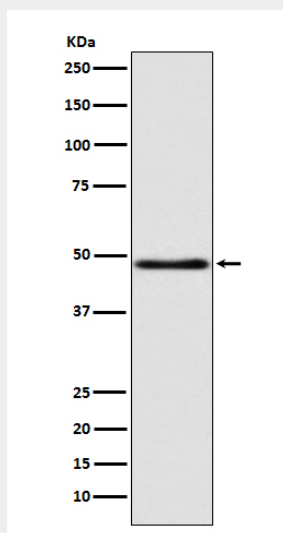
Highly expressed in normal germinal center (GC) B- cells and GC B-cell-derived malignancies.

GCET1 Antibody - Protocols

Provided below are standard protocols that you may find useful for product applications.

- [Western Blot](#)
- [Blocking Peptides](#)
- [Dot Blot](#)
- [Immunohistochemistry](#)
- [Immunofluorescence](#)
- [Immunoprecipitation](#)
- [Flow Cytometry](#)
- [Cell Culture](#)

GCET1 Antibody - Images



Western blot analysis of GCET1 expression in MCF7 cell lysate.