

Annexin A2 Antibody
Rabbit mAb
Catalog # AP91291

Specification

Annexin A2 Antibody - Product Information

Application	WB, IHC, FC, ICC
Primary Accession	P07355
Reactivity	Rat
Clonality	Monoclonal

Other Names

Annexin A2; Annexin II; Annexin-2; Calpactin I heavy chain; PAP-IV; Protein I; p36; ANXA2; ANX2; ANX2L4; CAL1H; LPC2D; Annexin2; HEL S 270;

Isotype	Rabbit IgG
Host	Rabbit
Calculated MW	38604 Da

Annexin A2 Antibody - Additional Information

Purification	Affinity-chromatography
Immunogen	A synthesized peptide derived from human Annexin A2
Description	Originally identified as a protein inhibitor of phospholipase A2, annexin A2 has subsequently been shown to interact with an array of protein and non-protein partners, including F-actin, spectrin, SNARE complexes, RNA, and virus particles.
Storage Condition and Buffer	Rabbit IgG in phosphate buffered saline , pH 7.4, 150mM NaCl, 0.02% sodium azide and 50% glycerol. Store at +4°C short term. Store at -20°C long term. Avoid freeze / thaw cycle.

Annexin A2 Antibody - Protein Information

Name ANXA2

Synonyms ANX2, ANX2L4, CAL1H, LPC2D

Function

Calcium-regulated membrane-binding protein whose affinity for calcium is greatly enhanced by anionic phospholipids. It binds two calcium ions with high affinity. May be involved in heat-stress response. Inhibits PCSK9-enhanced LDLR degradation, probably reduces PCSK9 protein levels via a translational mechanism but also competes with LDLR for binding with PCSK9 (PubMed:18799458, PubMed:22848640, PubMed:22848640).

href="http://www.uniprot.org/citations/24808179" target="_blank">24808179).

Cellular Location

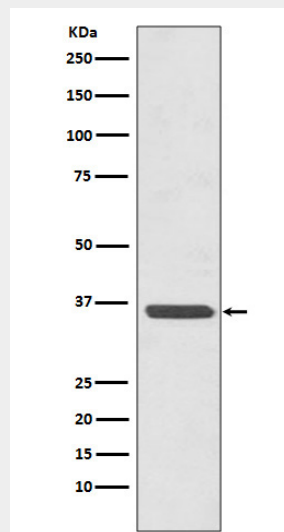
Secreted, extracellular space, extracellular matrix, basement membrane. Melanosome. Note=In the lamina beneath the plasma membrane. Identified by mass spectrometry in melanosome fractions from stage I to stage IV. Translocated from the cytoplasm to the cell surface through a Golgi-independent mechanism

Annexin A2 Antibody - Protocols

Provided below are standard protocols that you may find useful for product applications.

- [Western Blot](#)
- [Blocking Peptides](#)
- [Dot Blot](#)
- [Immunohistochemistry](#)
- [Immunofluorescence](#)
- [Immunoprecipitation](#)
- [Flow Cytometry](#)
- [Cell Culture](#)

Annexin A2 Antibody - Images



Western blot analysis of Annexin A2 expression in HeLa cell lysate.