

Lipoprotein lipase Antibody
Rabbit mAb
Catalog # AP91289

Specification

Lipoprotein lipase Antibody - Product Information

Application	WB, IHC
Primary Accession	P06858
Clonality	Monoclonal
Other Names	
HDLCQ11; LIPD; Lipoprotein lipase; LPL; LPL protein;	
Isotype	Rabbit IgG
Host	Rabbit
Calculated MW	53162 Da

Lipoprotein lipase Antibody - Additional Information

Purification	Affinity-chromatography
Immunogen	A synthesized peptide derived from human Lipoprotein lipase
Description	The primary function of this lipase is the hydrolysis of triglycerides of circulating chylomicrons and very low density lipoproteins (VLDL). Binding to heparin sulfate proteoglycans at the cell surface is vital to the function. The apolipoprotein, APOC2, acts as a coactivator of LPL activity in the presence of lipids on the luminal surface of vascular endothelium.
Storage Condition and Buffer	Rabbit IgG in phosphate buffered saline , pH 7.4, 150mM NaCl, 0.02% sodium azide and 50% glycerol. Store at +4°C short term. Store at -20°C long term. Avoid freeze / thaw cycle.

Lipoprotein lipase Antibody - Protein Information

Name LPL

Synonyms LIPD

Function

Key enzyme in triglyceride metabolism. Catalyzes the hydrolysis of triglycerides from circulating chylomicrons and very low density lipoproteins (VLDL), and thereby plays an important role in lipid clearance from the blood stream, lipid utilization and storage (PubMed:[11342582](http://www.uniprot.org/citations/11342582), PubMed:[27578112](http://www.uniprot.org/citations/27578112), PubMed:[8675619](http://www.uniprot.org/citations/8675619)). Although it has

both phospholipase and triglyceride lipase activities it is primarily a triglyceride lipase with low but detectable phospholipase activity (PubMed:12032167, PubMed:7592706). Mediates margination of triglyceride-rich lipoprotein particles in capillaries (PubMed:24726386). Recruited to its site of action on the luminal surface of vascular endothelium by binding to GPIHBP1 and cell surface heparan sulfate proteoglycans (PubMed:11342582, PubMed:27811232).

Cellular Location

Cell membrane {ECO:0000250|UniProtKB:P11151}; Peripheral membrane protein {ECO:0000250|UniProtKB:P11151}; Extracellular side {ECO:0000250|UniProtKB:P11151}. Secreted. Secreted, extracellular space, extracellular matrix. Note=Newly synthesized LPL binds to cell surface heparan proteoglycans and is then released by heparanase Subsequently, it becomes attached to heparan proteoglycan on endothelial cells (PubMed:27811232). Locates to the plasma membrane of microvilli of hepatocytes with triglyceride-rich lipoproteins (TRL) Some of the bound LPL is then internalized and located inside non- coated endocytic vesicles (By similarity) {ECO:0000250|UniProtKB:P11151, ECO:0000269|PubMed:27811232}

Tissue Location

Detected in blood plasma (PubMed:11893776, PubMed:12641539, PubMed:2340307). Detected in milk (at protein level) (PubMed:2340307).

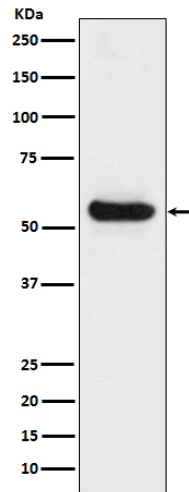
Lipoprotein lipase Antibody - Protocols

Provided below are standard protocols that you may find useful for product applications.

- [Western Blot](#)
- [Blocking Peptides](#)
- [Dot Blot](#)
- [Immunohistochemistry](#)
- [Immunofluorescence](#)
- [Immunoprecipitation](#)
- [Flow Cytometry](#)
- [Cell Culture](#)

Lipoprotein lipase Antibody - Images





Western blot analysis of Lipoprotein lipase expression in Human fetal liver lysate.