

MRP2 Antibody
Rabbit mAb
Catalog # AP91288

Specification

MRP2 Antibody - Product Information

Application	WB, FC, ICC
Primary Accession	O92887
Clonality	Monoclonal
Other Names	
ABC30; abcC2; CMOAT1; cMRP;	
Isotype	Rabbit IgG
Host	Rabbit
Calculated MW	174207 Da

MRP2 Antibody - Additional Information

Purification	Affinity-chromatography
Immunogen	A synthesized peptide derived from human MRP2
Description	Mediates hepatobiliary excretion of numerous organic anions. May function as a cellular cisplatin transporter.
Storage Condition and Buffer	Rabbit IgG in phosphate buffered saline , pH 7.4, 150mM NaCl, 0.02% sodium azide and 50% glycerol. Store at +4°C short term. Store at -20°C long term. Avoid freeze / thaw cycle.

MRP2 Antibody - Protein Information

Name **ABCC2** ([HGNC:53](#))

Function

ATP-dependent transporter of the ATP-binding cassette (ABC) family that binds and hydrolyzes ATP to enable active transport of various substrates including many drugs, toxicants and endogenous compound across cell membranes. Transports a wide variety of conjugated organic anions such as sulfate-, glucuronide- and glutathione (GSH)- conjugates of endo- and xenobiotics substrates (PubMed:[10220572](http://www.uniprot.org/citations/10220572), PubMed:[10421658](http://www.uniprot.org/citations/10421658), PubMed:[11500505](http://www.uniprot.org/citations/11500505), PubMed:[16332456](http://www.uniprot.org/citations/16332456)). Mediates hepatobiliary excretion of mono- and bis-glucuronidated bilirubin molecules and therefore play an important role in bilirubin detoxification (PubMed:[10421658](http://www.uniprot.org/citations/10421658)). Mediates also hepatobiliary excretion of others glucuronide conjugates such as 17beta-estradiol 17-glucosiduronic acid and leukotriene C4 (PubMed:[11500505](http://www.uniprot.org/citations/11500505)). Transports

sulfated bile salt such as tauroolithocholate sulfate (PubMed:16332456). Transports various anticancer drugs, such as anthracycline, vinca alkaloid and methotrexate and HIV-drugs such as protease inhibitors (PubMed:10220572, PubMed:11500505, PubMed:12441801). Confers resistance to several anti-cancer drugs including cisplatin, doxorubicin, epirubicin, methotrexate, etoposide and vincristine (PubMed:10220572, PubMed:11500505).

Cellular Location

Apical cell membrane; Multi-pass membrane protein. Note=Localized to the apical membrane of enterocytes

Tissue Location

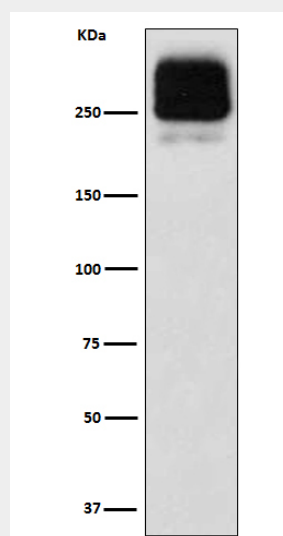
Expressed by polarized cells in liver, kidney and intestine. The highest expression is found in liver. Expressed in small intestine (PubMed:28408210).

MRP2 Antibody - Protocols

Provided below are standard protocols that you may find useful for product applications.

- [Western Blot](#)
- [Blocking Peptides](#)
- [Dot Blot](#)
- [Immunohistochemistry](#)
- [Immunofluorescence](#)
- [Immunoprecipitation](#)
- [Flow Cytometry](#)
- [Cell Culture](#)

MRP2 Antibody - Images



Western blot analysis of MRP2 expression in HepG2 cell lysate.