

IKK gamma Antibody
Rabbit mAb
Catalog # AP91273

Specification

IKK gamma Antibody - Product Information

Application **WB, IHC, FC, ICC, IP**
Primary Accession [O9Y6K9](#)
Reactivity **Rat**
Clonality **Monoclonal**

Other Names

AMCBX1; FIP3; Fip3p; Ikbkg; IKK-gamma; IKKAP1; IKKG; IMD33; IP1; IP2; IPD2; NEMO; NF kappa B essential modifier;

Isotype **Rabbit IgG**
Host **Rabbit**
Calculated MW **48198 Da**

IKK gamma Antibody - Additional Information

Purification **Affinity-chromatography**
Immunogen **A synthesized peptide derived from human IKK gamma**
Description **The NF- κ B/Rel transcription factors are present in the cytosol in an inactive state, complexed with the inhibitory I κ B proteins. Most agents that activate NF- κ B do so through a common pathway based on phosphorylation-induced, proteasome-mediated degradation of I κ B. Rabbit IgG in phosphate buffered saline , pH 7.4, 150mM NaCl, 0.02% sodium azide and 50% glycerol. Store at +4°C short term. Store at -20°C long term. Avoid freeze / thaw cycle.**

Storage Condition and Buffer

IKK gamma Antibody - Protein Information

Name **IKBKG ([HGNC:5961](#))**

Synonyms **FIP3, NEMO**

Function

Regulatory subunit of the IKK core complex which phosphorylates inhibitors of NF-kappa-B thus leading to the dissociation of the inhibitor/NF-kappa-B complex and ultimately the degradation of the inhibitor (PubMed: [14695475](http://www.uniprot.org/citations/14695475), PubMed: [20724660](http://www.uniprot.org/citations/20724660), PubMed: [21518757](http://www.uniprot.org/citations/21518757), PubMed: [9751060](http://www.uniprot.org/citations/9751060))

target="_blank">9751060). Its binding to scaffolding polyubiquitin plays a key role in IKK activation by multiple signaling receptor pathways (PubMed:16547522, PubMed:18287044, PubMed:19033441, PubMed:19185524, PubMed:21606507, PubMed:27777308, PubMed:33567255). Can recognize and bind both 'Lys-63'-linked and linear polyubiquitin upon cell stimulation, with a much higher affinity for linear polyubiquitin (PubMed:16547522, PubMed:18287044, PubMed:19033441, PubMed:19185524, PubMed:21606507, PubMed:27777308). Could be implicated in NF-kappa-B-mediated protection from cytokine toxicity. Essential for viral activation of IRF3 (PubMed:19854139). Involved in TLR3- and IFIH1-mediated antiviral innate response; this function requires 'Lys- 27'-linked polyubiquitination (PubMed:20724660).

Cellular Location

Cytoplasm. Nucleus Note=Sumoylated NEMO accumulates in the nucleus in response to genotoxic stress.

Tissue Location

Heart, brain, placenta, lung, liver, skeletal muscle, kidney and pancreas

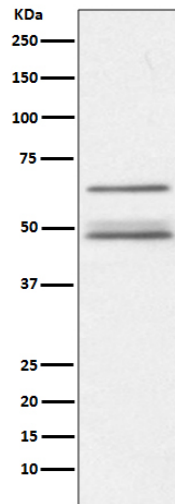
IKK gamma Antibody - Protocols

Provided below are standard protocols that you may find useful for product applications.

- [Western Blot](#)
- [Blocking Peptides](#)
- [Dot Blot](#)
- [Immunohistochemistry](#)
- [Immunofluorescence](#)
- [Immunoprecipitation](#)
- [Flow Cytometry](#)
- [Cell Culture](#)

IKK gamma Antibody - Images





Western blot analysis of IKK gamma expression in Jurkat cell lysate.