

**SOS1 Antibody**  
Rabbit mAb  
Catalog # AP91267

## Specification

---

### SOS1 Antibody - Product Information

Application	WB, IHC, ICC
Primary Accession	<a href="#">Q07889</a>
Reactivity	Rat
Clonality	Monoclonal
<b>Other Names</b>	
alternate SOS1; GF1; GGF1; GINGF; gingival fibromatosis; HGF; NS4; Sos1;	
Isotype	Rabbit IgG
Host	Rabbit
Calculated MW	152464 Da

### SOS1 Antibody - Additional Information

Purification	Affinity-chromatography
Immunogen	A synthesized peptide derived from human SOS1
Description	Promotes the exchange of Ras-bound GDP by GTP.
Storage Condition and Buffer	Rabbit IgG in phosphate buffered saline , pH 7.4, 150mM NaCl, 0.02% sodium azide and 50% glycerol. Store at +4°C short term. Store at -20°C long term. Avoid freeze / thaw cycle.

### SOS1 Antibody - Protein Information

**Name** SOS1

#### Function

Promotes the exchange of Ras-bound GDP by GTP (PubMed:<a href="http://www.uniprot.org/citations/8493579" target="\_blank">8493579</a>). Probably by promoting Ras activation, regulates phosphorylation of MAP kinase MAPK3 in response to EGF (PubMed:<a href="http://www.uniprot.org/citations/17339331" target="\_blank">17339331</a>). Catalytic component of a trimeric complex that participates in transduction of signals from Ras to Rac by promoting the Rac-specific guanine nucleotide exchange factor (GEF) activity (By similarity).

#### Tissue Location

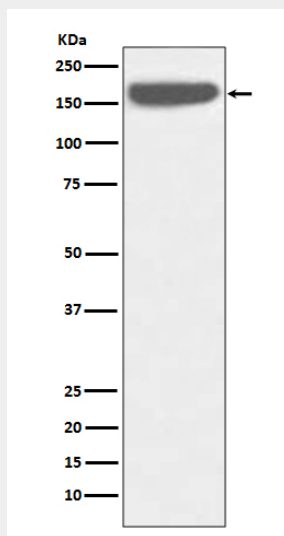
Expressed in gingival tissues.

### SOS1 Antibody - Protocols

Provided below are standard protocols that you may find useful for product applications.

- [Western Blot](#)
- [Blocking Peptides](#)
- [Dot Blot](#)
- [Immunohistochemistry](#)
- [Immunofluorescence](#)
- [Immunoprecipitation](#)
- [Flow Cytometry](#)
- [Cell Culture](#)

### SOS1 Antibody - Images



Western blot analysis of SOS1 expression in HeLa cell lysate.