

Apg10 (Atg10) Antibody
Rabbit mAb
Catalog # AP91266

Specification

Apg10 (Atg10) Antibody - Product Information

Application	WB, IP
Primary Accession	Q9H0Y0
Clonality	Monoclonal
Other Names	
APG10L;ATG10 autophagy related 10 homolog (S. cerevisiae); ATG10 autophagy related 10 homolog; Autophagy related protein 10;	
Isotype	Rabbit IgG
Host	Rabbit
Calculated MW	25279 Da

Apg10 (Atg10) Antibody - Additional Information

Purification	Affinity-chromatography
Immunogen	A synthesized peptide derived from human Apg10 (Atg10)
Description	E2-like enzyme involved in autophagy. Acts as an E2-like enzyme that catalyzes the conjugation of ATG12 to ATG5. ATG12 conjugation to ATG5 is required for autophagy. Likely serves as an ATG5-recognition molecule. Not involved in ATG12 conjugation to ATG3 (By similarity). Plays a role in adenovirus-mediated cell lysis.
Storage Condition and Buffer	Rabbit IgG in phosphate buffered saline , pH 7.4, 150mM NaCl, 0.02% sodium azide and 50% glycerol. Store at +4°C short term. Store at -20°C long term. Avoid freeze / thaw cycle.

Apg10 (Atg10) Antibody - Protein Information

Name ATG10

Synonyms APG10L

Function

E2-like enzyme involved in autophagy. Acts as an E2-like enzyme that catalyzes the conjugation of ATG12 to ATG5. ATG12 conjugation to ATG5 is required for autophagy. Likely serves as an ATG5-recognition molecule. Not involved in ATG12 conjugation to ATG3 (By similarity). Plays a role in adenovirus-mediated cell lysis.

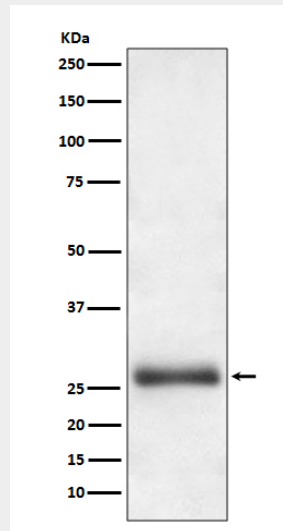
Cellular Location
Cytoplasm.

Apg10 (Atg10) Antibody - Protocols

Provided below are standard protocols that you may find useful for product applications.

- [Western Blot](#)
- [Blocking Peptides](#)
- [Dot Blot](#)
- [Immunohistochemistry](#)
- [Immunofluorescence](#)
- [Immunoprecipitation](#)
- [Flow Cytometry](#)
- [Cell Culture](#)

Apg10 (Atg10) Antibody - Images



Western blot analysis of Apg10 (Atg10) expression in HeLa cell lysate.