

CHAT Antibody
Rabbit mAb
Catalog # AP91262

Specification

CHAT Antibody - Product Information

Application	WB, FC, ICC, IP
Primary Accession	P28329
Reactivity	Rat
Clonality	Monoclonal

Other Names

Acetyl CoA choline O acetyltransferase; ChAT; CHOACTase; Choline acetylase; choline acetyltransferase; Choline O acetyltransferase; CMS1A2;

Isotype	Rabbit IgG
Host	Rabbit
Calculated MW	82536 Da

CHAT Antibody - Additional Information

Purification	Affinity-chromatography
Immunogen	A synthesized peptide derived from human CHAT
Description	Catalyzes the reversible synthesis of acetylcholine (ACh) from acetyl CoA and choline at cholinergic synapses.
Storage Condition and Buffer	Rabbit IgG in phosphate buffered saline , pH 7.4, 150mM NaCl, 0.02% sodium azide and 50% glycerol. Store at +4°C short term. Store at -20°C long term. Avoid freeze / thaw cycle.

CHAT Antibody - Protein Information

Name CHAT

Function

Catalyzes the reversible synthesis of acetylcholine (ACh) from acetyl CoA and choline at cholinergic synapses.

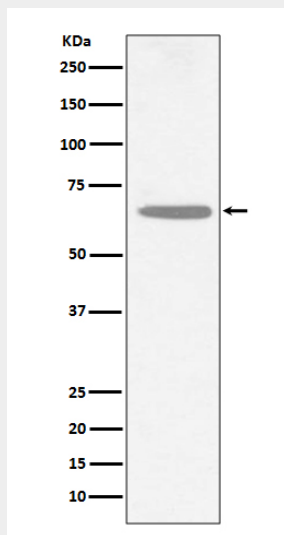
CHAT Antibody - Protocols

Provided below are standard protocols that you may find useful for product applications.

- [Western Blot](#)
- [Blocking Peptides](#)
- [Dot Blot](#)

- [Immunohistochemistry](#)
- [Immunofluorescence](#)
- [Immunoprecipitation](#)
- [Flow Cytometry](#)
- [Cell Culture](#)

CHAT Antibody - Images



Western blot analysis of CHAT expression in SH-SY5Y cell lysate.