

**MIF Antibody**  
Rabbit mAb  
Catalog # AP91259

## Specification

---

### MIF Antibody - Product Information

|  |                        |
|--|------------------------|
| Application  | WB, FC, IP             |
| Primary Accession  | <a href="#">P14174</a> |
| Reactivity   | Rat                    |
| Clonality  | Monoclonal             |
| <b>Other Names</b>   |                        |
| GIF; GLIF; Glycosylation inhibiting factor; L-dopachrome isomerase; MIF protein; MMIF; |                        |
| Isotype  | Rabbit IgG             |
| Host   | Rabbit                 |
| Calculated MW  | 12476 Da               |

### MIF Antibody - Additional Information

|                              |  |
|------------------------------|--|
| Purification                 | Affinity-chromatography  |
| Immunogen                    | A synthesized peptide derived from human MIF   |
| Description                  | MIF promotes the systemic inflammatory response by counter-regulating glucocorticoid-mediated inhibition of immune-cell activation and proinflammatory cytokine production. MIF may mediate tissue destruction through the induction of proteinases. |
| Storage Condition and Buffer | Rabbit IgG in phosphate buffered saline , pH 7.4, 150mM NaCl, 0.02% sodium azide and 50% glycerol. Store at +4°C short term. Store at -20°C long term. Avoid freeze / thaw cycle.  |

### MIF Antibody - Protein Information

**Name** MIF {ECO:0000303|PubMed:2552447, ECO:0000312|HGNC:HGNC:7097}

#### Function

Pro-inflammatory cytokine involved in the innate immune response to bacterial pathogens (PubMed:<a href="http://www.uniprot.org/citations/15908412" target="\_blank">15908412</a>, PubMed:<a href="http://www.uniprot.org/citations/17443469" target="\_blank">17443469</a>, PubMed:<a href="http://www.uniprot.org/citations/23776208" target="\_blank">23776208</a>). The expression of MIF at sites of inflammation suggests a role as mediator in regulating the function of macrophages in host defense (PubMed:<a href="http://www.uniprot.org/citations/15908412" target="\_blank">15908412</a>, PubMed:<a href="http://www.uniprot.org/citations/17443469" target="\_blank">17443469</a>, PubMed:<a href="http://www.uniprot.org/citations/23776208" target="\_blank">23776208</a>). Counteracts

the anti-inflammatory activity of glucocorticoids (PubMed:<a href="http://www.uniprot.org/citations/15908412" target="\_blank">15908412</a>, PubMed:<a href="http://www.uniprot.org/citations/17443469" target="\_blank">17443469</a>, PubMed:<a href="http://www.uniprot.org/citations/23776208" target="\_blank">23776208</a>). Has phenylpyruvate tautomerase and dopachrome tautomerase activity (in vitro), but the physiological substrate is not known (PubMed:<a href="http://www.uniprot.org/citations/11439086" target="\_blank">11439086</a>, PubMed:<a href="http://www.uniprot.org/citations/17526494" target="\_blank">17526494</a>). It is not clear whether the tautomerase activity has any physiological relevance, and whether it is important for cytokine activity (PubMed:<a href="http://www.uniprot.org/citations/11439086" target="\_blank">11439086</a>, PubMed:<a href="http://www.uniprot.org/citations/17526494" target="\_blank">17526494</a>).

### Cellular Location

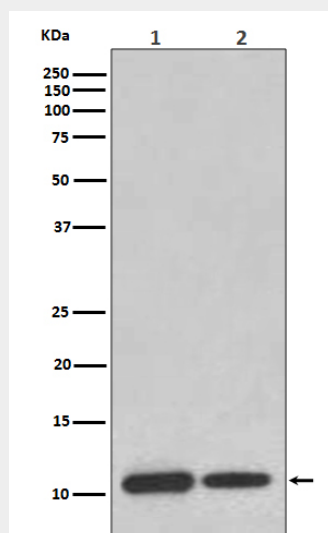
Secreted. Cytoplasm. Note=Does not have a cleavable signal sequence and is secreted via a specialized, non-classical pathway Secreted by macrophages upon stimulation by bacterial lipopolysaccharide (LPS), or by M.tuberculosis antigens

### MIF Antibody - Protocols

Provided below are standard protocols that you may find useful for product applications.

- [Western Blot](#)
- [Blocking Peptides](#)
- [Dot Blot](#)
- [Immunohistochemistry](#)
- [Immunofluorescence](#)
- [Immunoprecipitation](#)
- [Flow Cytometry](#)
- [Cell Culture](#)

### MIF Antibody - Images



Western blot analysis of MIF expression in (1) THP-1 cell lysate; (2) Mouse brain lysate.