

A2M Antibody
Rabbit mAb
Catalog # AP91252

Specification

A2M Antibody - Product Information

Application	WB, IHC
Primary Accession	P01023
Clonality	Monoclonal
Other Names	
A2m; Alpha 2M; Alpha-2-macroglobulin; C3 and PZP-like alpha-2-macroglobulin domain-containing protein 5; CPAMD5; FWP007; S863 7;	
Isotype	Rabbit IgG
Host	Rabbit
Calculated MW	163291 Da

A2M Antibody - Additional Information

Purification	Affinity-chromatography
Immunogen	A synthesized peptide derived from human A2M
Description	Alpha-2-macroglobulin is a protease inhibitor and cytokine transporter. It inhibits many proteases, including trypsin, thrombin and collagenase. A2M is implicated in Alzheimer disease (AD) due to its ability to mediate the clearance and degradation of A-beta, the major component of beta-amyloid deposits.
Storage Condition and Buffer	Rabbit IgG in phosphate buffered saline , pH 7.4, 150mM NaCl, 0.02% sodium azide and 50% glycerol. Store at +4°C short term. Store at -20°C long term. Avoid freeze / thaw cycle.

A2M Antibody - Protein Information

Name A2M

Synonyms CPAMD5

Function

Is able to inhibit all four classes of proteinases by a unique 'trapping' mechanism. This protein has a peptide stretch, called the 'bait region' which contains specific cleavage sites for different proteinases. When a proteinase cleaves the bait region, a conformational change is induced in the protein which traps the proteinase. The entrapped enzyme remains active against low molecular weight substrates (activity against high molecular weight substrates is greatly reduced). Following cleavage in the bait region, a thioester bond is hydrolyzed and mediates the covalent binding of

the protein to the proteinase.

Cellular Location

Secreted.

Tissue Location

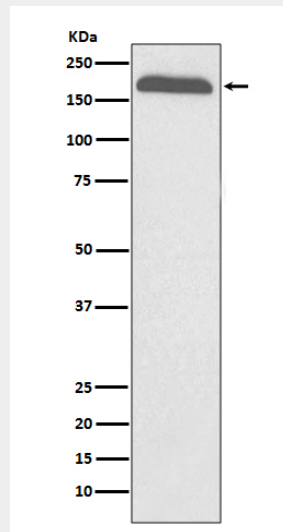
Secreted in plasma..

A2M Antibody - Protocols

Provided below are standard protocols that you may find useful for product applications.

- [Western Blot](#)
- [Blocking Peptides](#)
- [Dot Blot](#)
- [Immunohistochemistry](#)
- [Immunofluorescence](#)
- [Immunoprecipitation](#)
- [Flow Cytometry](#)
- [Cell Culture](#)

A2M Antibody - Images



Western blot analysis of A2M expression in human plasma lysate.