

TIMP3 Antibody (Center)
Affinity Purified Rabbit Polyclonal Antibody (Pab)
Catalog # AP9124c**Specification**

TIMP3 Antibody (Center) - Product Information

Application	WB, IHC-P, FC,E
Primary Accession	P35625
Other Accession	P48032 , O97590 , P39876 , P61269 , P79121 , O9TUL9
Reactivity	Human, Mouse
Predicted	Bovine, Horse, Monkey, Rabbit, Rat
Host	Rabbit
Clonality	Polyclonal
Isotype	Rabbit IgG
Calculated MW	24145
Antigen Region	113-139

TIMP3 Antibody (Center) - Additional Information**Gene ID** 7078**Other Names**

Metalloproteinase inhibitor 3, Protein MIG-5, Tissue inhibitor of metalloproteinases 3, TIMP-3, TIMP3

Target/Specificity

This TIMP3 antibody is generated from rabbits immunized with a KLH conjugated synthetic peptide between 113-139 amino acids from the Central region of human TIMP3.

DilutionWB~~1:1000
IHC-P~~1:10~50
FC~~1:10~50**Format**

Purified polyclonal antibody supplied in PBS with 0.09% (W/V) sodium azide. This antibody is purified through a protein A column, followed by peptide affinity purification.

Storage

Maintain refrigerated at 2-8°C for up to 2 weeks. For long term storage store at -20°C in small aliquots to prevent freeze-thaw cycles.

Precautions

TIMP3 Antibody (Center) is for research use only and not for use in diagnostic or therapeutic procedures.

TIMP3 Antibody (Center) - Protein Information

Name TIMP3

Function Complexes with metalloproteinases (such as collagenases) and irreversibly inactivates them by binding to their catalytic zinc cofactor. May form part of a tissue-specific acute response to remodeling stimuli. Known to act on MMP-1, MMP-2, MMP-3, MMP-7, MMP-9, MMP-13, MMP-14 and MMP-15.

Cellular Location

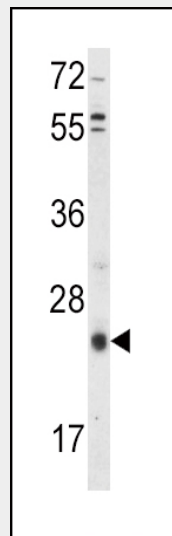
Secreted, extracellular space, extracellular matrix

TIMP3 Antibody (Center) - Protocols

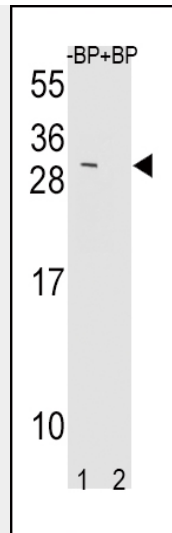
Provided below are standard protocols that you may find useful for product applications.

- [Western Blot](#)
- [Blocking Peptides](#)
- [Dot Blot](#)
- [Immunohistochemistry](#)
- [Immunofluorescence](#)
- [Immunoprecipitation](#)
- [Flow Cytometry](#)
- [Cell Culture](#)

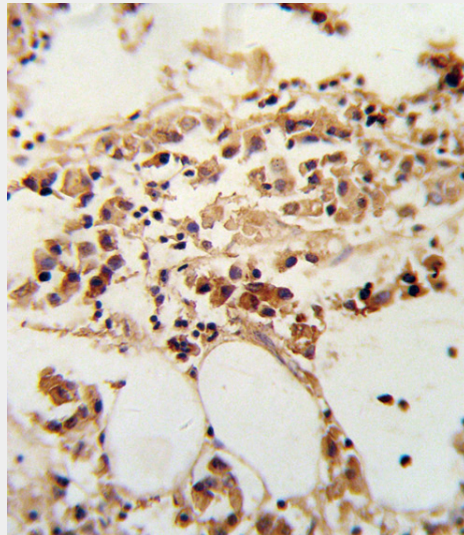
TIMP3 Antibody (Center) - Images



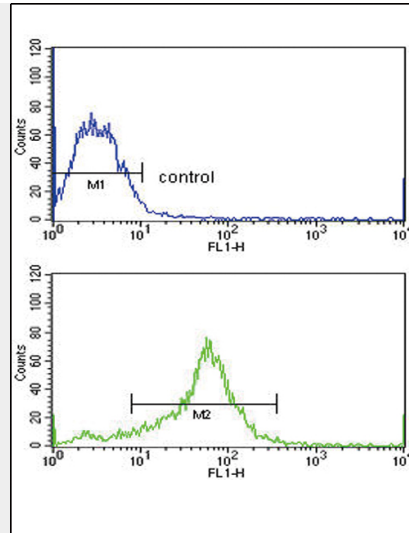
Western blot analysis of TIMP3 Antibody (Center) (Cat. #AP9124c) in HepG2 cell line lysates (35ug/lane). TIMP3 (arrow) was detected using the purified Pab.



Western blot analysis of TIMP3 Antibody (Center) Pab (Cat. #AP9124c) pre-incubated without (lane 1) and with (lane 2) blocking peptide in mouse NIH-3T3 cell line lysate. TIMP3 Antibody (Center) (arrow) was detected using the purified Pab.



Formalin-fixed and paraffin-embedded human breast carcinoma reacted with TIMP3 Antibody (Center), which was peroxidase-conjugated to the secondary antibody, followed by DAB staining. This data demonstrates the use of this antibody for immunohistochemistry; clinical relevance has not been evaluated.



TIMP3 Antibody (Center) (Cat. #AP9124c) flow cytometric analysis of MCF-7 cells (bottom histogram) compared to a negative control cell (top histogram). FITC-conjugated goat-anti-rabbit secondary antibodies were used for the analysis.

TIMP3 Antibody (Center) - Background

TIMP3 is one of inhibitors of the matrix metalloproteinases, a group of peptidases involved in degradation of the extracellular matrix (ECM).

TIMP3 Antibody (Center) - References

Jacobson, S.G., et al., Nat. Genet. 11 (1), 27-32 (1995) Wick, M., et al., Biochem. J. 311 (PT 2), 549-554 (1995)