

EGF Antibody
Rabbit mAb
Catalog # AP91248

Specification

EGF Antibody - Product Information

Application	WB, IP
Primary Accession	P01133
Clonality	Monoclonal
Other Names	
Beta urogastrone; Egf; Epidermal growth factor; HOMG4; Pro epidermal growth factor; URG; Urogastrone;	
Isotype	Rabbit IgG
Host	Rabbit
Calculated MW	133994 Da

EGF Antibody - Additional Information

Purification	Affinity-chromatography
Immunogen	A synthesized peptide derived from human EGF
Description	EGF stimulates the growth of various epidermal and epithelial tissues in vivo and in vitro and of some fibroblasts in cell culture. Magnesiotropic hormone that stimulates magnesium reabsorption in the renal distal convoluted tubule via engagement of EGFR and activation of the magnesium channel TRPM6.
Storage Condition and Buffer	Rabbit IgG in phosphate buffered saline , pH 7.4, 150mM NaCl, 0.02% sodium azide and 50% glycerol. Store at +4°C short term. Store at -20°C long term. Avoid freeze / thaw cycle.

EGF Antibody - Protein Information

Name EGF

Function

EGF stimulates the growth of various epidermal and epithelial tissues in vivo and in vitro and of some fibroblasts in cell culture. Magnesiotropic hormone that stimulates magnesium reabsorption in the renal distal convoluted tubule via engagement of EGFR and activation of the magnesium channel TRPM6. Can induce neurite outgrowth in motoneurons of the pond snail *Lymnaea stagnalis* in vitro (PubMed: <http://www.uniprot.org/citations/10964941> target="_blank">10964941).

Cellular Location

Membrane; Single-pass type I membrane protein.

Tissue Location

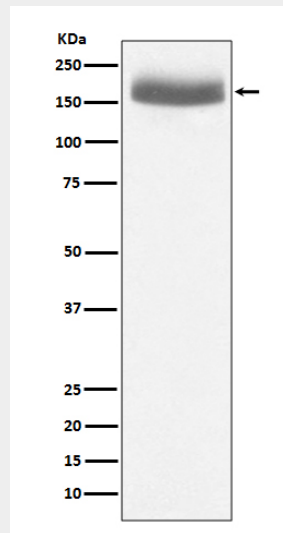
Expressed in kidney, salivary gland, cerebrum and prostate.

EGF Antibody - Protocols

Provided below are standard protocols that you may find useful for product applications.

- [Western Blot](#)
- [Blocking Peptides](#)
- [Dot Blot](#)
- [Immunohistochemistry](#)
- [Immunofluorescence](#)
- [Immunoprecipitation](#)
- [Flow Cytometry](#)
- [Cell Culture](#)

EGF Antibody - Images



Western blot analysis of EGF expression in human urine sample lysate.