

CD40L Antibody
Rabbit mAb
Catalog # AP91237

Specification

CD40L Antibody - Product Information

Application	WB
Primary Accession	P29965
Clonality	Monoclonal
Other Names	
CD40 ligand; CD40-L; T-cell antigen Gp39; TNF-related activation protein; TRAP; CD154; CD40 ligand, membrane form; CD40 ligand, soluble form; CD40LG; CD40L; TNFSF5; TRAP;	
Isotype	Rabbit IgG
Host	Rabbit
Calculated MW	29274 Da

CD40L Antibody - Additional Information

Purification	Affinity-chromatography
Immunogen	A synthesized peptide derived from human CD40L
Description	Mediates B-cell proliferation in the absence of co-stimulus as well as IgE production in the presence of IL-4. Involved in immunoglobulin class switching.
Storage Condition and Buffer	Rabbit IgG in phosphate buffered saline , pH 7.4, 150mM NaCl, 0.02% sodium azide and 50% glycerol. Store at +4°C short term. Store at -20°C long term. Avoid freeze / thaw cycle.

CD40L Antibody - Protein Information

Name CD40LG

Synonyms CD40L, TNFSF5, TRAP

Function

Cytokine that acts as a ligand to CD40/TNFRSF5 (PubMed:[1280226](http://www.uniprot.org/citations/1280226), PubMed:[31331973](http://www.uniprot.org/citations/31331973)). Costimulates T-cell proliferation and cytokine production (PubMed:[8617933](http://www.uniprot.org/citations/8617933)). Its cross-linking on T-cells generates a costimulatory signal which enhances the production of IL4 and IL10 in conjunction with the TCR/CD3 ligation and CD28 costimulation (PubMed:[8617933](http://www.uniprot.org/citations/8617933)). Induces the activation of NF-kappa-B (PubMed:[15067037](http://www.uniprot.org/citations/15067037))

target="_blank">15067037, PubMed:31331973). Induces the activation of kinases MAPK8 and PAK2 in T-cells (PubMed:15067037). Induces tyrosine phosphorylation of isoform 3 of CD28 (PubMed:15067037). Mediates B-cell proliferation in the absence of co-stimulus as well as IgE production in the presence of IL4 (By similarity). Involved in immunoglobulin class switching (By similarity).

Cellular Location

Cell membrane; Single-pass type II membrane protein. Cell surface

Tissue Location

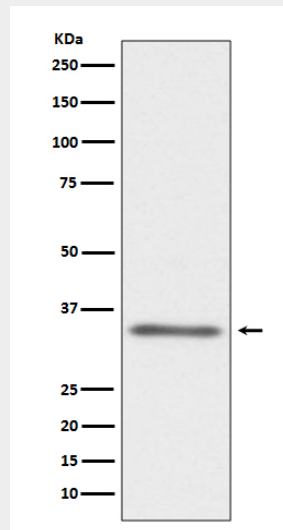
Specifically expressed on activated CD4+ T- lymphocytes

CD40L Antibody - Protocols

Provided below are standard protocols that you may find useful for product applications.

- [Western Blot](#)
- [Blocking Peptides](#)
- [Dot Blot](#)
- [Immunohistochemistry](#)
- [Immunofluorescence](#)
- [Immunoprecipitation](#)
- [Flow Cytometry](#)
- [Cell Culture](#)

CD40L Antibody - Images



Western blot analysis of CD40L expression in MOLT-4 cell lysate.