

Axin2 Antibody
Rabbit mAb
Catalog # AP91233

Specification

Axin2 Antibody - Product Information

Application	WB, IHC, ICC
Primary Accession	O9Y2T1
Reactivity	Rat
Clonality	Monoclonal
Other Names	
Axil; Axin like protein; Axin2; Axis inhibition protein 2; Conductin;	
Isotype	Rabbit IgG
Host	Rabbit
Calculated MW	93558 Da

Axin2 Antibody - Additional Information

Purification	Affinity-chromatography
Immunogen	A synthesized peptide derived from human Axin2
Description	Axin1 (Axis inhibition protein 1) and Axin2 are multidomain scaffold proteins that negatively regulate Wnt signaling. Axin1 interacts with APC, GSK-3 β , Dvl, and β -catenin and promotes the GSK-3 β -mediated phosphorylation and subsequent degradation of β -catenin .Down-regulates beta-catenin.
Storage Condition and Buffer	Rabbit IgG in phosphate buffered saline , pH 7.4, 150mM NaCl, 0.02% sodium azide and 50% glycerol. Store at +4°C short term. Store at -20°C long term. Avoid freeze / thaw cycle.

Axin2 Antibody - Protein Information

Name AXIN2

Function

Inhibitor of the Wnt signaling pathway. Down-regulates beta- catenin. Probably facilitate the phosphorylation of beta-catenin and APC by GSK3B.

Cellular Location

Cytoplasm.

Tissue Location

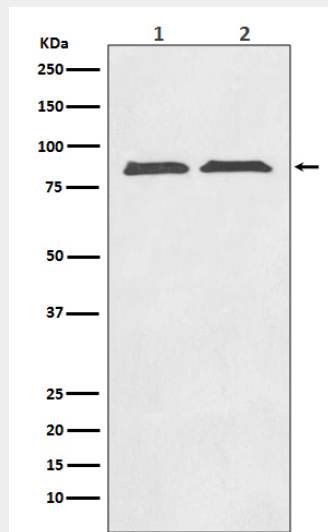
Expressed in brain and lymphoblast.

Axin2 Antibody - Protocols

Provided below are standard protocols that you may find useful for product applications.

- [Western Blot](#)
- [Blocking Peptides](#)
- [Dot Blot](#)
- [Immunohistochemistry](#)
- [Immunofluorescence](#)
- [Immunoprecipitation](#)
- [Flow Cytometry](#)
- [Cell Culture](#)

Axin2 Antibody - Images



Western blot analysis of Axin2 expression in (1) SW480 cell lysate; (2) PC-12 cell lysate.