

**Syndecan 1 Antibody**  
**Rabbit mAb**  
**Catalog # AP91222****Specification**

---

**Syndecan 1 Antibody - Product Information**

Application	<b>WB, IHC, ICC</b>
Primary Accession	<a href="#">P18827</a>
Reactivity	<b>Rat</b>
Clonality	<b>Monoclonal</b>
<b>Other Names</b>	
CD138; CD138 antigen; heparan sulfate proteoglycan fibroblast growth factor receptor; Sdc1; SYND1; Syndecan 1; syndecan proteoglycan 1;	
Isotype	<b>Rabbit IgG</b>
Host	<b>Rabbit</b>
Calculated MW	<b>32462 Da</b>

**Syndecan 1 Antibody - Additional Information**

Purification	<b>Affinity-chromatography</b>
Immunogen	<b>A synthesized peptide derived from human Syndecan 1</b>
Description	<b>Cell surface proteoglycan that bears both heparan sulfate and chondroitin sulfate and that links the cytoskeleton to the interstitial matrix.</b>
Storage Condition and Buffer	<b>Rabbit IgG in phosphate buffered saline , pH 7.4, 150mM NaCl, 0.02% sodium azide and 50% glycerol. Store at +4°C short term. Store at -20°C long term. Avoid freeze / thaw cycle.</b>

**Syndecan 1 Antibody - Protein Information****Name** SDC1 ([HGNC:10658](#))**Synonyms** SDC**Function**

Cell surface proteoglycan that contains both heparan sulfate and chondroitin sulfate and that links the cytoskeleton to the interstitial matrix (By similarity). Regulates exosome biogenesis in concert with SDCBP and PDCD6IP (PubMed:<a href="http://www.uniprot.org/citations/22660413" target="\_blank">22660413</a>). Able to induce its own expression in dental mesenchymal cells and also in the neighboring dental epithelial cells via an MSX1-mediated pathway (By similarity).

**Cellular Location**

Membrane; Single-pass type I membrane protein. Secreted Secreted, extracellular exosome  
Note=Shedding of the ectodomain produces a soluble form

### Tissue Location

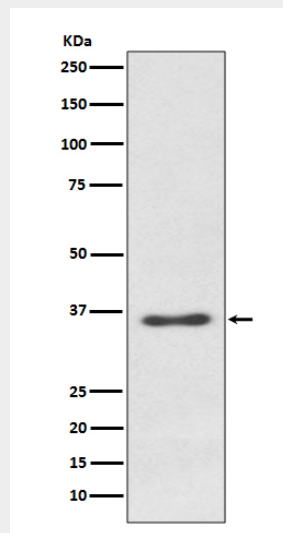
Detected in placenta (at protein level) (PubMed:32337544). Detected in fibroblasts (at protein level) (PubMed:36213313).

### Syndecan 1 Antibody - Protocols

Provided below are standard protocols that you may find useful for product applications.

- [Western Blot](#)
- [Blocking Peptides](#)
- [Dot Blot](#)
- [Immunohistochemistry](#)
- [Immunofluorescence](#)
- [Immunoprecipitation](#)
- [Flow Cytometry](#)
- [Cell Culture](#)

### Syndecan 1 Antibody - Images



Western blot analysis of Syndecan 1 expression in Ramos cell lysate.