

**Catalase Antibody**  
Rabbit mAb  
Catalog # AP91213

## Specification

---

### Catalase Antibody - Product Information

Application	WB, IHC
Primary Accession	<a href="#">P04040</a>
Reactivity	Rat
Clonality	Monoclonal
<b>Other Names</b>	
Cas1; CAT; Catalase; Cs1;	
Isotype	Rabbit IgG
Host	Rabbit
Calculated MW	59756 Da

### Catalase Antibody - Additional Information

Purification	Affinity-chromatography
Immunogen	A synthesized peptide derived from human Catalase
Description	Catalase catalyzes the conversion of hydrogen peroxide to water and oxygen. Research studies show that overexpression of this antioxidant enzyme increases the ability of pancreatic $\beta$ -cells to scavenge reactive oxygen species (ROS), thereby protecting pancreatic $\beta$ -cells from oxidative stress.
Storage Condition and Buffer	Rabbit IgG in phosphate buffered saline , pH 7.4, 150mM NaCl, 0.02% sodium azide and 50% glycerol. Store at +4°C short term. Store at -20°C long term. Avoid freeze / thaw cycle.

### Catalase Antibody - Protein Information

**Name** CAT

#### Function

Catalyzes the degradation of hydrogen peroxide (H<sub>2</sub>O<sub>2</sub>) generated by peroxisomal oxidases to water and oxygen, thereby protecting cells from the toxic effects of hydrogen peroxide (PubMed:[7882369](http://www.uniprot.org/citations/7882369)). Promotes growth of cells including T-cells, B-cells, myeloid leukemia cells, melanoma cells, mastocytoma cells and normal and transformed fibroblast cells (PubMed:[7882369](http://www.uniprot.org/citations/7882369)).

#### Cellular Location

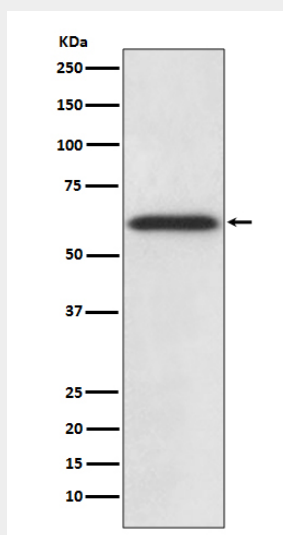
Peroxisome matrix

### Catalase Antibody - Protocols

Provided below are standard protocols that you may find useful for product applications.

- [Western Blot](#)
- [Blocking Peptides](#)
- [Dot Blot](#)
- [Immunohistochemistry](#)
- [Immunofluorescence](#)
- [Immunoprecipitation](#)
- [Flow Cytometry](#)
- [Cell Culture](#)

### Catalase Antibody - Images



Western blot analysis of Catalase expression in HepG2 cell lysate.