

DCAMKL1 Antibody
Rabbit mAb
Catalog # AP91203**Specification**

DCAMKL1 Antibody - Product Information

Application	WB, IHC, ICC
Primary Accession	O15075
Reactivity	Rat
Clonality	Monoclonal
Other Names	
CL1; CLICK1; Cpg16; DCDC3A; Dclk; Dclk1;	
Isotype	Rabbit IgG
Host	Rabbit
Calculated MW	82224 Da

DCAMKL1 Antibody - Additional Information

Purification	Affinity-chromatography
Immunogen	A synthesized peptide derived from human DCAMKL1
Description	Probable kinase that may be involved in a calcium-signaling pathway controlling neuronal migration in the developing brain. May also participate in functions of the mature nervous system.
Storage Condition and Buffer	Rabbit IgG in phosphate buffered saline , pH 7.4, 150mM NaCl, 0.02% sodium azide and 50% glycerol. Store at +4°C short term. Store at -20°C long term. Avoid freeze / thaw cycle.

DCAMKL1 Antibody - Protein Information**Name** DCLK1**Synonyms** DCAMKL1, DCDC3A, KIAA0369**Function**

Probable kinase that may be involved in a calcium-signaling pathway controlling neuronal migration in the developing brain. May also participate in functions of the mature nervous system.

Tissue Location

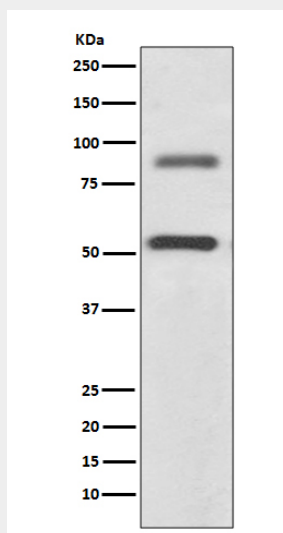
In fetal tissues, highly expressed in brain, detectable in lung and liver, but not in kidney. In adult tissues, expressed ubiquitously in the brain, detectable in the heart, liver, spleen, thymus, prostate, testis, ovary, small intestine and colon. The type A isoforms seem to be expressed predominantly in fetal brain whereas type B isoforms are expressed abundantly in both fetal and adult brain.

DCAMKL1 Antibody - Protocols

Provided below are standard protocols that you may find useful for product applications.

- [Western Blot](#)
- [Blocking Peptides](#)
- [Dot Blot](#)
- [Immunohistochemistry](#)
- [Immunofluorescence](#)
- [Immunoprecipitation](#)
- [Flow Cytometry](#)
- [Cell Culture](#)

DCAMKL1 Antibody - Images



Western blot analysis of DCAMKL1 expression in SH-SY5Y cell lysate;.