

BNIP3 Antibody
Rabbit mAb
Catalog # AP91201

Specification

BNIP3 Antibody - Product Information

Application	WB, IHC, ICC
Primary Accession	Q12983
Reactivity	Rat
Clonality	Monoclonal
Other Names	
BNIP3; NIP3;	
Isotype	Rabbit IgG
Host	Rabbit
Calculated MW	27832 Da

BNIP3 Antibody - Additional Information

Purification	Affinity-chromatography
Immunogen	A synthesized peptide derived from human BNIP3
Description	Apoptosis-inducing protein that, which can overcome BCL2 suppression. May play a role in repartitioning calcium between the two major intracellular calcium stores in association with BCL2.
Storage Condition and Buffer	Rabbit IgG in phosphate buffered saline , pH 7.4, 150mM NaCl, 0.02% sodium azide and 50% glycerol. Store at +4°C short term. Store at -20°C long term. Avoid freeze / thaw cycle.

BNIP3 Antibody - Protein Information

Name BNIP3 ([HGNC:1084](#))

Synonyms NIP3

Function

Apoptosis-inducing protein that can overcome BCL2 suppression. May play a role in repartitioning calcium between the two major intracellular calcium stores in association with BCL2. Involved in mitochondrial quality control via its interaction with SPATA18/MIEAP: in response to mitochondrial damage, participates in mitochondrial protein catabolic process (also named MALM) leading to the degradation of damaged proteins inside mitochondria. The physical interaction of SPATA18/MIEAP, BNIP3 and BNIP3L/NIX at the mitochondrial outer membrane regulates the opening of a pore in the mitochondrial double membrane in order to mediate the translocation of lysosomal proteins from the cytoplasm to the mitochondrial matrix. Plays an important role in the calprotectin (S100A8/A9)-induced cell death pathway.

Cellular Location

Mitochondrion. Mitochondrion outer membrane; Single-pass membrane protein.

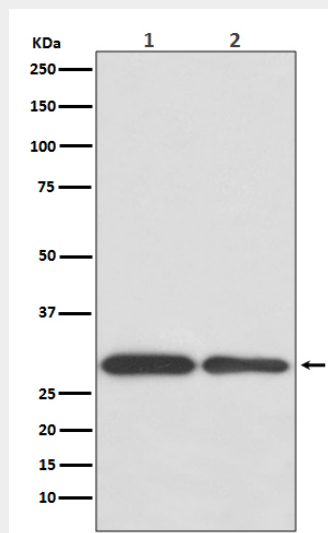
Note=Coexpression with the E1B 19-kDa protein results in a shift in NIP3 localization pattern to the nuclear envelope. Colocalizes with ACAA2 in the mitochondria. Colocalizes with SPATA18 at the mitochondrion outer membrane

BNIP3 Antibody - Protocols

Provided below are standard protocols that you may find useful for product applications.

- [Western Blot](#)
- [Blocking Peptides](#)
- [Dot Blot](#)
- [Immunohistochemistry](#)
- [Immunofluorescence](#)
- [Immunoprecipitation](#)
- [Flow Cytometry](#)
- [Cell Culture](#)

BNIP3 Antibody - Images



Western blot analysis of BNIP3 expression in (1) Jurkat cell lysate; (2) Mouse spleen lysate.