

**AMPD2 Antibody (Center)**  
**Purified Rabbit Polyclonal Antibody (Pab)**  
**Catalog # AP9118c**

**Specification**

---

**AMPD2 Antibody (Center) - Product Information**

Application	<b>WB, IHC-P, FC,E</b>
Primary Accession	<a href="#">O01433</a>
Reactivity	<b>Human</b>
Host	<b>Rabbit</b>
Clonality	<b>Polyclonal</b>
Isotype	<b>Rabbit IgG</b>
Calculated MW	<b>94890</b>
Antigen Region	<b>187-217</b>

**AMPD2 Antibody (Center) - Additional Information**

**Gene ID** 271

**Other Names**

AMP deaminase 2, AMP deaminase isoform L, AMPD2

**Target/Specificity**

This AMPD2 antibody is generated from rabbits immunized with a KLH conjugated synthetic peptide between 187-217 amino acids from the Central region of human AMPD2.

**Dilution**

WB~~1:1000  
IHC-P~~1:50~100  
FC~~1:10~50

**Format**

Purified polyclonal antibody supplied in PBS with 0.09% (W/V) sodium azide. This antibody is prepared by Saturated Ammonium Sulfate (SAS) precipitation followed by dialysis against PBS.

**Storage**

Maintain refrigerated at 2-8°C for up to 2 weeks. For long term storage store at -20°C in small aliquots to prevent freeze-thaw cycles.

**Precautions**

AMPD2 Antibody (Center) is for research use only and not for use in diagnostic or therapeutic procedures.

**AMPD2 Antibody (Center) - Protein Information**

**Name** AMPD2 ([HGNC:469](#))

**Function** AMP deaminase plays a critical role in energy metabolism. Catalyzes the deamination of

AMP to IMP and plays an important role in the purine nucleotide cycle.

#### Tissue Location

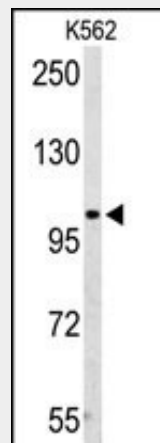
Highly expressed in cerebellum.

#### AMPD2 Antibody (Center) - Protocols

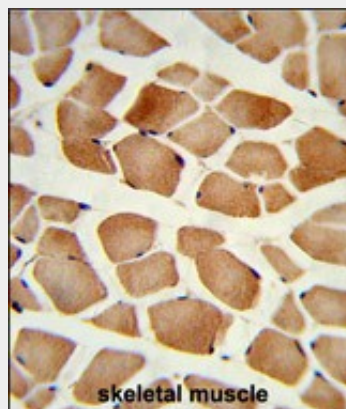
Provided below are standard protocols that you may find useful for product applications.

- [Western Blot](#)
- [Blocking Peptides](#)
- [Dot Blot](#)
- [Immunohistochemistry](#)
- [Immunofluorescence](#)
- [Immunoprecipitation](#)
- [Flow Cytometry](#)
- [Cell Culture](#)

#### AMPD2 Antibody (Center) - Images

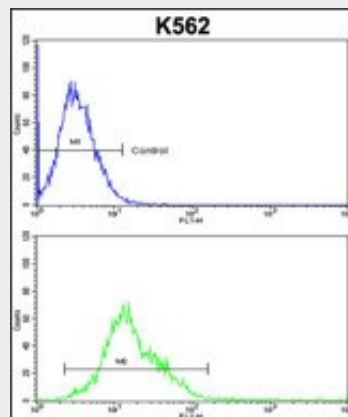


Western blot analysis of AMPD2 Antibody (Center) (Cat. #AP9118c) in K562 cell line lysates (35ug/lane). AMPD2 (arrow) was detected using the purified Pab.



Formalin-fixed and paraffin-embedded human skeletal muscle reacted with AMPD2 Antibody (Center), which was peroxidase-conjugated to the secondary antibody, followed by DAB staining. This data demonstrates the use of this antibody for immunohistochemistry; clinical relevance has

not been evaluated.



AMPD2 Antibody (Center) (Cat. #AP9118c) flow cytometric analysis of k562 cells (bottom histogram) compared to a negative control cell (top histogram).FITC-conjugated goat-anti-rabbit secondary antibodies were used for the analysis.

#### **AMPD2 Antibody (Center) - Background**

AMP deaminase plays a critical role in energy metabolism.

#### **AMPD2 Antibody (Center) - References**

Haas,A.L. et.al., Biochem. Biophys. Res. Commun. 305 (2), 421-427 (2003)  
Mahnke-Zizelman,D.K., et.al., Biochim. Biophys. Acta 1308 (2), 122-132 (1996)