

**IP10 Antibody**  
**Rabbit mAb**  
**Catalog # AP91180**

## Specification

---

### IP10 Antibody - Product Information

Application	<b>WB</b>
Primary Accession	<a href="#">P02778</a>
Clonality	<b>Monoclonal</b>
<b>Other Names</b>	
C-X-C motif chemokine 10; 10 kDa interferon gamma-induced protein; Gamma-IP10; IP-10; Small-inducible cytokine B10; CXCL10; INP10; SCYB10; MOB1;	
Isotype	<b>Rabbit IgG</b>
Host	<b>Rabbit</b>
Calculated MW	<b>10881 Da</b>

### IP10 Antibody - Additional Information

Purification	<b>Affinity-chromatography</b>
Immunogen	<b>A synthesized peptide derived from human IP10</b>
Description	<b>Chemotactic for monocytes and T-lymphocytes. Binds to CXCR3.</b>
Storage Condition and Buffer	<b>Rabbit IgG in phosphate buffered saline , pH 7.4, 150mM NaCl, 0.02% sodium azide and 50% glycerol. Store at +4°C short term. Store at -20°C long term. Avoid freeze / thaw cycle.</b>

### IP10 Antibody - Protein Information

**Name** CXCL10

**Synonyms** INP10, SCYB10

#### Function

Pro-inflammatory cytokine that is involved in a wide variety of processes such as chemotaxis, differentiation, and activation of peripheral immune cells, regulation of cell growth, apoptosis and modulation of angiostatic effects (PubMed: [11157474](http://www.uniprot.org/citations/11157474), PubMed: [22652417](http://www.uniprot.org/citations/22652417), PubMed: [7540647](http://www.uniprot.org/citations/7540647)). Plays thereby an important role during viral infections by stimulating the activation and migration of immune cells to the infected sites (By similarity). Mechanistically, binding of CXCL10 to the CXCR3 receptor activates G protein-mediated signaling and results in downstream activation of phospholipase C-dependent pathway, an increase in intracellular calcium production and actin reorganization (PubMed: [12750173](http://www.uniprot.org/citations/12750173), PubMed: [19151743](http://www.uniprot.org/citations/19151743)). In turn,

recruitment of activated Th1 lymphocytes occurs at sites of inflammation (PubMed:<a href="http://www.uniprot.org/citations/12663757" target="\_blank">12663757</a>, PubMed:<a href="http://www.uniprot.org/citations/12750173" target="\_blank">12750173</a>). Activation of the CXCL10/CXCR3 axis also plays an important role in neurons in response to brain injury for activating microglia, the resident macrophage population of the central nervous system, and directing them to the lesion site. This recruitment is an essential element for neuronal reorganization (By similarity).

#### **Cellular Location** Secreted.

#### **Tissue Location**

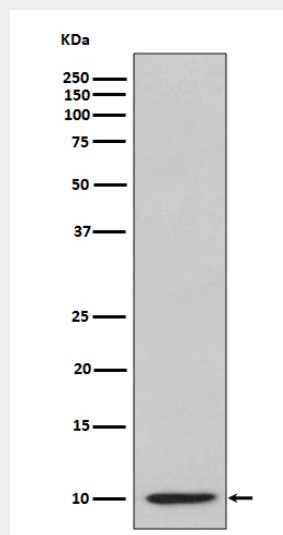
Mainly secreted by monocytes, endothelial cells as well as fibroblasts. Expressed by epithelial cells in thymus (PubMed:11157474). Microglial cells produce CXCL10 in response to viral stimulation (PubMed:12663757).

### **IP10 Antibody - Protocols**

Provided below are standard protocols that you may find useful for product applications.

- [Western Blot](#)
- [Blocking Peptides](#)
- [Dot Blot](#)
- [Immunohistochemistry](#)
- [Immunofluorescence](#)
- [Immunoprecipitation](#)
- [Flow Cytometry](#)
- [Cell Culture](#)

### **IP10 Antibody - Images**



Western blot analysis of IP10 expression in IP10 recombinant protein lysate.