

**CD59 Antibody**  
Rabbit mAb  
Catalog # AP91166

## Specification

---

### CD59 Antibody - Product Information

Application	WB, FC, ICC, IP
Primary Accession	<a href="#">P13987</a>
Clonality	Monoclonal
<b>Other Names</b>	
CD59 glycoprotein; HRF20; MAC-IP; MEM43 antigen; MACIF; MIRL; Protectin; MIC11; MIN1; p18 20;	
Isotype	Rabbit IgG
Host	Rabbit
Calculated MW	14177 Da

### CD59 Antibody - Additional Information

Purification	Affinity-chromatography
Immunogen	A synthesized peptide derived from human CD59
Description	CD59 is a GPI-anchored glycoprotein that is expressed on leukocytes, vascular endothelial cells, various epithelial cells and placenta. Involved in signal transduction for T-cell activation complexed to a protein tyrosine kinase.
Storage Condition and Buffer	Rabbit IgG in phosphate buffered saline , pH 7.4, 150mM NaCl, 0.02% sodium azide and 50% glycerol. Store at +4°C short term. Store at -20°C long term. Avoid freeze / thaw cycle.

### CD59 Antibody - Protein Information

**Name** CD59

**Synonyms** MIC11, MIN1, MIN2, MIN3, MSK21

#### Function

Potent inhibitor of the complement membrane attack complex (MAC) action. Acts by binding to the C8 and/or C9 complements of the assembling MAC, thereby preventing incorporation of the multiple copies of C9 required for complete formation of the osmolytic pore. This inhibitor appears to be species-specific. Involved in signal transduction for T-cell activation complexed to a protein tyrosine kinase.

#### Cellular Location

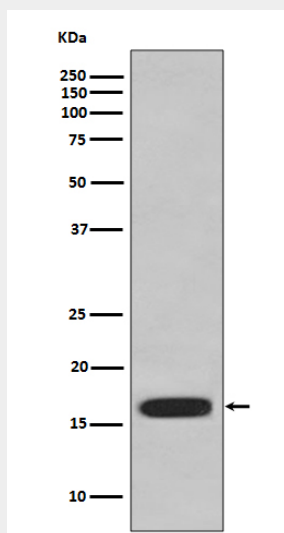
Cell membrane; Lipid-anchor, GPI-anchor. Secreted. Note=Soluble form found in a number of tissues

## CD59 Antibody - Protocols

Provided below are standard protocols that you may find useful for product applications.

- [Western Blot](#)
- [Blocking Peptides](#)
- [Dot Blot](#)
- [Immunohistochemistry](#)
- [Immunofluorescence](#)
- [Immunoprecipitation](#)
- [Flow Cytometry](#)
- [Cell Culture](#)

## CD59 Antibody - Images



Western blot analysis of CD59 expression in HUVEC cell lysate.