

**CD32 Antibody**  
Rabbit mAb  
Catalog # AP91165

## Specification

---

### CD32 Antibody - Product Information

Application	WB, IHC
Primary Accession	<a href="#">P12318</a>
Clonality	Monoclonal
<b>Other Names</b>	
CD32; CD32A; CD32B; CD32C; FCG2; FcGR; FCGR2; FCGR2A; FCGR2B; FCGR2C; Fcgr3a; FCRII; IGFR2;	
Isotype	Rabbit IgG
Host	Rabbit
Calculated MW	35001 Da

### CD32 Antibody - Additional Information

Purification	Affinity-chromatography
Immunogen	A synthesized peptide derived from human CD32
Description	Binds to the Fc region of immunoglobulins gamma. Low affinity receptor. By binding to IgG it initiates cellular responses against pathogens and soluble antigens.
Storage Condition and Buffer	Rabbit IgG in phosphate buffered saline , pH 7.4, 150mM NaCl, 0.02% sodium azide and 50% glycerol. Store at +4°C short term. Store at -20°C long term. Avoid freeze / thaw cycle.

### CD32 Antibody - Protein Information

**Name** FCGR2A

**Synonyms** CD32, FCG2, FCGR2A1, IGFR2

#### Function

Binds to the Fc region of immunoglobulins gamma. Low affinity receptor. By binding to IgG it initiates cellular responses against pathogens and soluble antigens. Promotes phagocytosis of opsonized antigens.

#### Cellular Location

Cell membrane; Single-pass type I membrane protein

#### Tissue Location

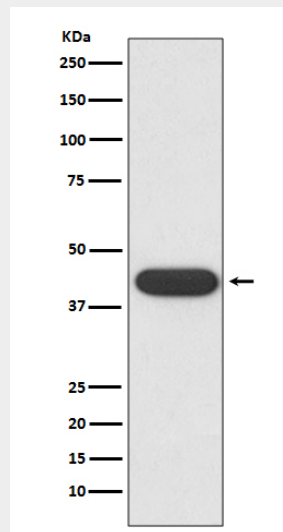
Found on monocytes, neutrophils and eosinophil platelets

## CD32 Antibody - Protocols

Provided below are standard protocols that you may find useful for product applications.

- [Western Blot](#)
- [Blocking Peptides](#)
- [Dot Blot](#)
- [Immunohistochemistry](#)
- [Immunofluorescence](#)
- [Immunoprecipitation](#)
- [Flow Cytometry](#)
- [Cell Culture](#)

## CD32 Antibody - Images



Western blot analysis of CD32 expression in K562 cell lysate.