

**Lipocalin-2 Antibody**  
Rabbit mAb  
Catalog # AP91161

**Specification**

---

**Lipocalin-2 Antibody - Product Information**

Application	WB, IHC, ICC
Primary Accession	<a href="#">P80188</a>
Clonality	Monoclonal
<b>Other Names</b>	
LCN2; 24p3; MSFI; NGAL; Lipocalin-2; p25; Siderocalin; SV40 induced 24P3 protein; Uterocalin;	
Isotype	Rabbit IgG
Host	Rabbit
Calculated MW	22588 Da

**Lipocalin-2 Antibody - Additional Information**

Purification	Affinity-chromatography
Immunogen	A synthesized peptide derived from human Lipocalin-2
Description	Lipocalin-2 is involved in innate immunity, iron homeostasis, and apoptosis. Lipocalin-2 limits bacterial growth by binding to bacterial siderophores and sequestering iron. Binds iron through association with 2,5-dihydroxybenzoic acid (2,5-DHBA), a siderophore that shares structural similarities with bacterial enterobactin, and delivers or removes iron from the cell, depending on the context.
Storage Condition and Buffer	Rabbit IgG in phosphate buffered saline , pH 7.4, 150mM NaCl, 0.02% sodium azide and 50% glycerol. Store at +4°C short term. Store at -20°C long term. Avoid freeze / thaw cycle.

**Lipocalin-2 Antibody - Protein Information**

**Name** LCN2

**Synonyms** HNL, NGAL {ECO:0000303|PubMed:8060329}

**Function**

Iron-trafficking protein involved in multiple processes such as apoptosis, innate immunity and renal development (PubMed: [12453413](http://www.uniprot.org/citations/12453413), PubMed: [20581821](http://www.uniprot.org/citations/20581821), PubMed: [27780864](http://www.uniprot.org/citations/27780864)). Binds iron through association with 2,3-dihydroxybenzoic acid

(2,3-DHBA), a siderophore that shares structural similarities with bacterial enterobactin, and delivers or removes iron from the cell, depending on the context. Iron-bound form (holo-24p3) is internalized following binding to the SLC22A17 (24p3R) receptor, leading to release of iron and subsequent increase of intracellular iron concentration. In contrast, association of the iron-free form (apo-24p3) with the SLC22A17 (24p3R) receptor is followed by association with an intracellular siderophore, iron chelation and iron transfer to the extracellular medium, thereby reducing intracellular iron concentration. Involved in apoptosis due to interleukin-3 (IL3) deprivation: iron-loaded form increases intracellular iron concentration without promoting apoptosis, while iron-free form decreases intracellular iron levels, inducing expression of the proapoptotic protein BCL2L11/BIM, resulting in apoptosis (By similarity). Involved in innate immunity; limits bacterial proliferation by sequestering iron bound to microbial siderophores, such as enterobactin (PubMed:<a href="http://www.uniprot.org/citations/27780864" target="\_blank">27780864</a>). Can also bind siderophores from M.tuberculosis (PubMed:<a href="http://www.uniprot.org/citations/15642259" target="\_blank">15642259</a>, PubMed:<a href="http://www.uniprot.org/citations/21978368" target="\_blank">21978368</a>).

### Cellular Location

Secreted. Cytoplasmic granule lumen. Cytoplasmic vesicle lumen. Note=Upon binding to the SLC22A17 (24p3R) receptor, it is internalized (By similarity). Releases the bound iron in the acidic lumen of cytoplasmic vesicles (PubMed:12453413, PubMed:20581821). {ECO:0000250|UniProtKB:P11672, ECO:0000269|PubMed:12453413, ECO:0000269|PubMed:20581821}

### Tissue Location

Detected in neutrophils (at protein level) (PubMed:7683678, PubMed:8298140). Expressed in bone marrow and in tissues that are prone to exposure to microorganism (PubMed:9339356) High expression is found in bone marrow as well as in uterus, prostate, salivary gland, stomach, appendix, colon, trachea and lung (PubMed:9339356). Expressed in the medullary tubules of the kidney (PubMed:30418175). Not found in the small intestine or peripheral blood leukocytes (PubMed:9339356).

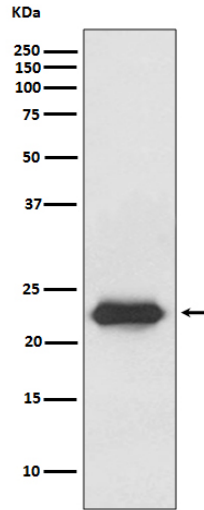
## Lipocalin-2 Antibody - Protocols

Provided below are standard protocols that you may find useful for product applications.

- [Western Blot](#)
- [Blocking Peptides](#)
- [Dot Blot](#)
- [Immunohistochemistry](#)
- [Immunofluorescence](#)
- [Immunoprecipitation](#)
- [Flow Cytometry](#)
- [Cell Culture](#)

## Lipocalin-2 Antibody - Images





Western blot analysis of Lipocalin-2 expression in SW480 cell lysate.